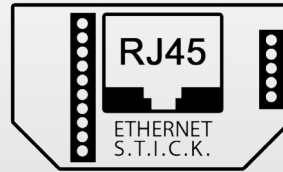
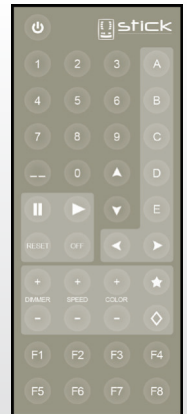


Package contents*

- IR remote control
- Ethernet add-on to be connected at the back of the STICK controller

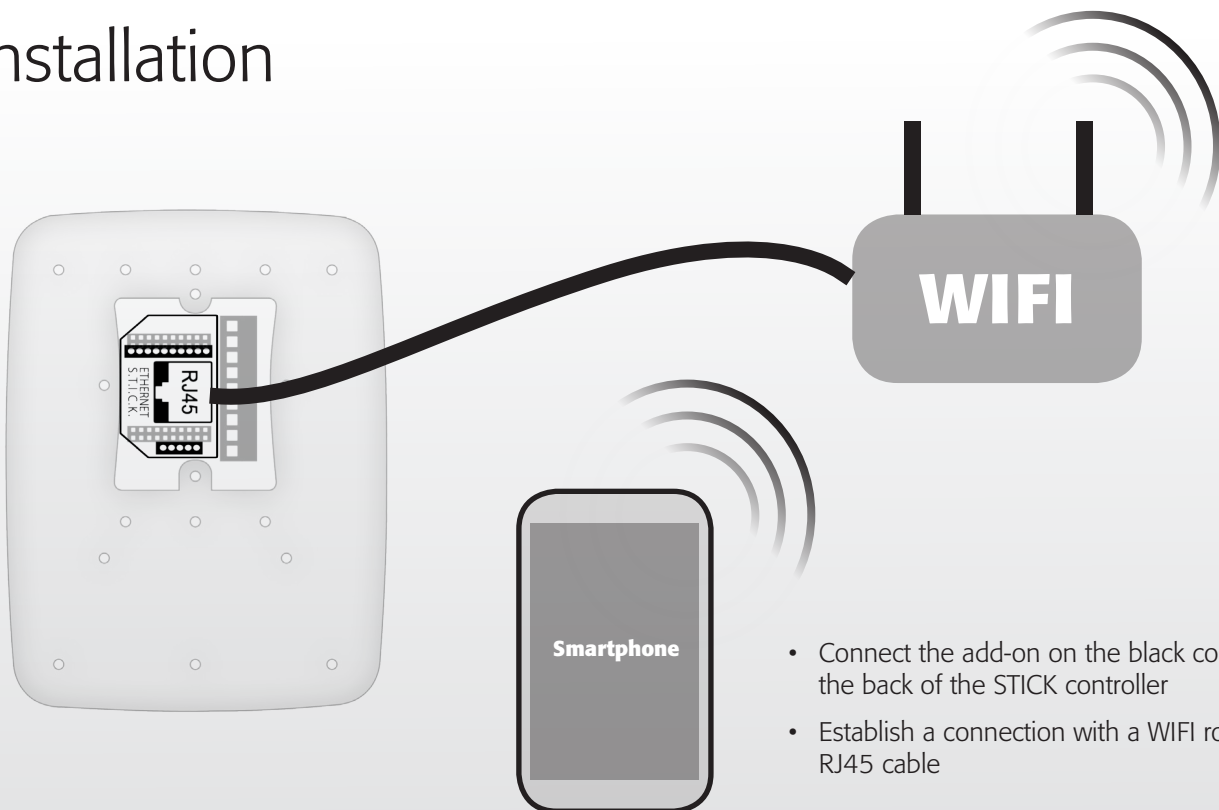
** compatible with STICK serial number > 1000 only*

IR Remote
Control



Ethernet add-on

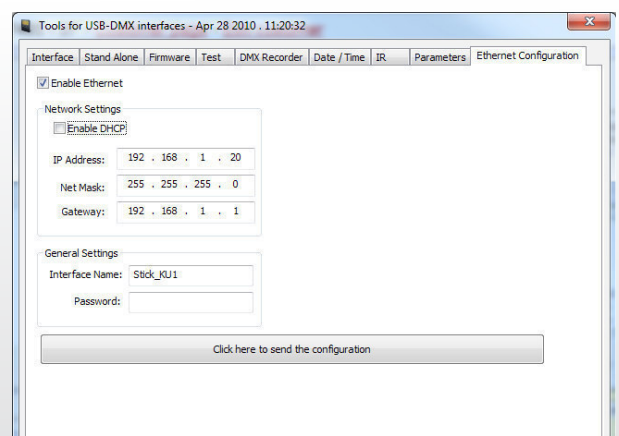
Installation



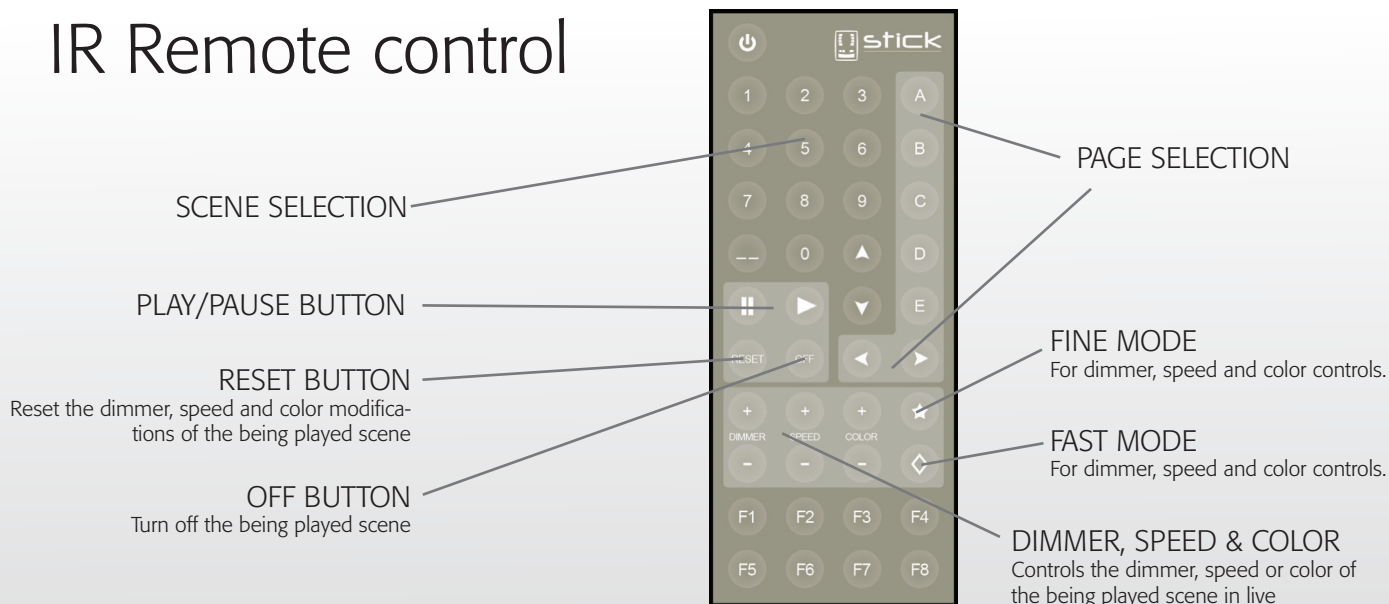
- Connect the add-on on the black connectors at the back of the STICK controller
- Establish a connection with a WIFI router using a RJ45 cable

Setup

- Start the TOOLS program and open the "Ethernet configuration" tab
- Select "Enable Ethernet"
- Select "DHCP" if your router is compatible
- Specify an IP address for the STICK controller if your router is not DHCP (Gateway is the IP address of the router)
- Specify a name for the STICK controller and a password if you want to secure the access



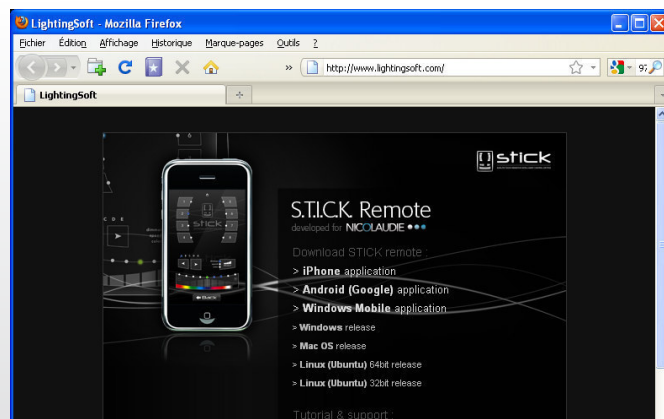
IR Remote control



Applications

To download the latest applications for the STICK-COM+, go to:

<http://www.lightingsoft.com>



Other connections

