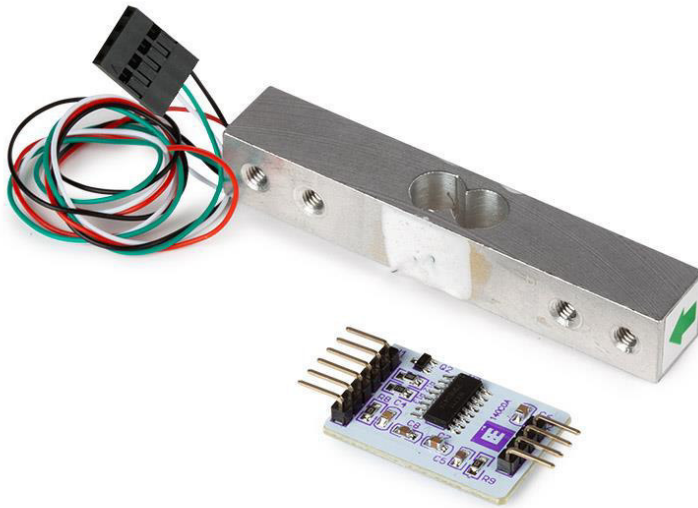


EN ELECTRONIC SCALE LOAD CELL SENSOR

WPSE471



## Introduction



### To all residents of the European Union

#### Important environmental information about this product

This symbol on the device or the package indicates that disposal of the device after its lifecycle could harm the environment. Do not dispose of the unit (or batteries) as unsorted municipal waste; it should be taken to a specialized company for recycling. This device should be returned to your distributor or to a local recycling service. Respect the local environmental rules.

**If in doubt, contact your local waste disposal authorities.**

Thank you for choosing Whadda! Please read the manual thoroughly before bringing this device into service. If the device was damaged in transit, do not install or use it and contact your dealer.

## Safety Instructions



Read and understand this manual and all safety signs before using this appliance.



For indoor use only.

- This device can be used by children aged from 8 years and above, and persons with reduced physical, sensory or mental capabilities or lack of experience and knowledge if they have been given supervision or instruction concerning the use of the device in a safe way and understand the hazards involved. Children shall not play with the device. Cleaning and user maintenance shall not be made by children without supervision.

## General Guidelines

- Refer to the Velleman® Service and Quality Warranty on the last pages of this manual.
- All modifications of the device are forbidden for safety reasons. Damage caused by user modifications to the device is not covered by the warranty.
- Only use the device for its intended purpose. Using the device in an unauthorised way will void the warranty.
- Damage caused by disregard of certain guidelines in this manual is not covered by the warranty and the dealer will not accept responsibility for any ensuing defects or problems.
- Nor Velleman nv nor its dealers can be held responsible for any damage (extraordinary, incidental or indirect) – of any nature (financial, physical...) arising from the possession, use or failure of this product.
- Keep this manual for future reference.

## What is Arduino®

Arduino® is an open-source prototyping platform based on easy-to-use hardware and software. Arduino® boards are able to read inputs – light-on sensor, a finger on a button or a Twitter message – and turn it into an output – activating of a motor, turning on an LED, publishing something online. You can tell your board what to do by sending a set of instructions to the microcontroller on the board. To do so, you use the Arduino programming language (based on Wiring) and the Arduino® software IDE (based on Processing). Additional shields/modules/components are required for reading a twitter message or publishing online. Surf to [www.arduino.cc](http://www.arduino.cc) for more information

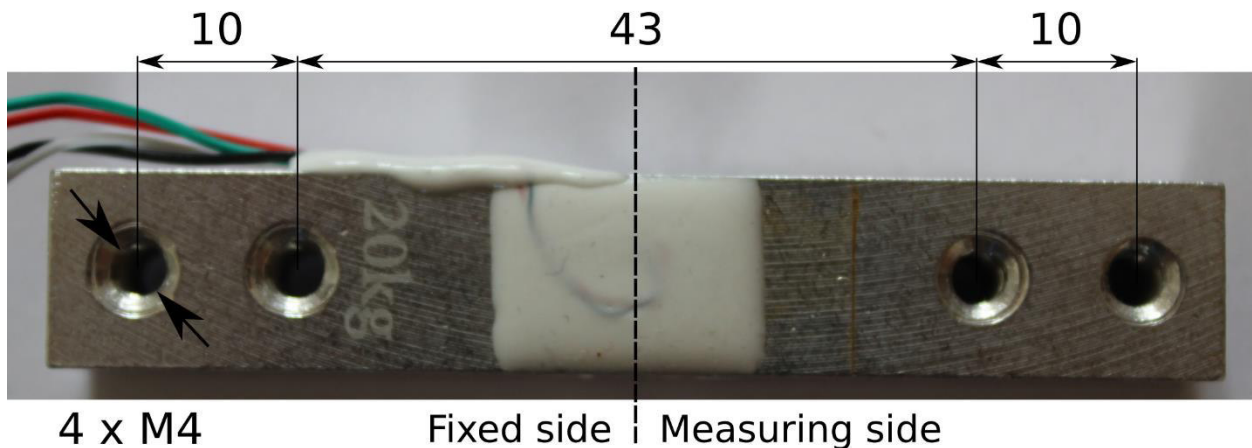
## Product overview

The Whadda electronic scale load cell sensor package combines both an accurate load cell rated up to 20 kg, and a sensitive A/D converter board that easily interfaces with a large variety of microcontrollers (such as an Arduino® compatible board).

In order to get accurate readings, the fixed side of the load cell should be mounted to a fixed, secure part. It is recommended to also mount a sturdy measuring surface where the weights can be placed upon to the measuring side of the load cell.

## Specifications

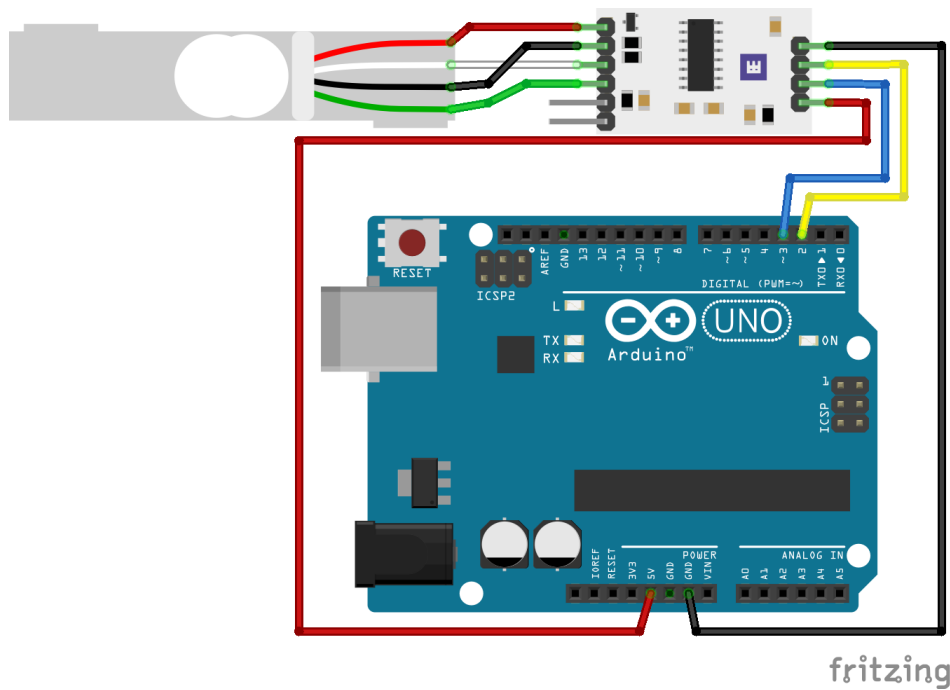
Load cell model: YZC-131  
 Rated load: 20 kg  
 Nonlinearity:  $\pm 0.05\%$  (Full-Scale)  
 Hysteresis: 0.0% (Full-Scale)  
 Repeatability: 0.05% (Full-Scale)  
 Creep (5 min): 0.05% (Full-Scale)  
 Temperature stability: 0.003% / °C (Full-Scale)  
 A/D converter IC: HX711  
 Supply voltage: 5 V DC  
 Weight: 35 g  
 Dimensions load cell (W x L x H): 13 x 75 x 12 mm  
 Dimensions sensor board (W x L x H): 40 x 20 x 7 mm



Note: all dimensions are in mm

## Wiring description

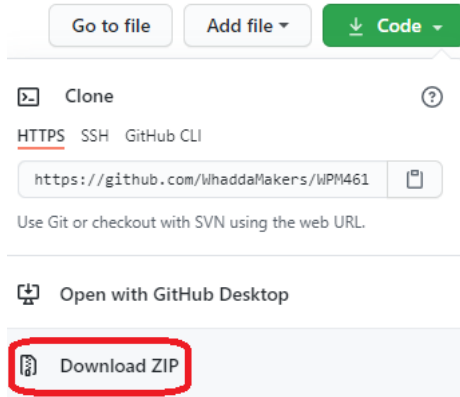
Pin	Name	Arduino® connection
VCC	Supply voltage (5 V DC)	5V
SCK	Clock signal	Digital Pin (e.g. D3)
DT	Data signal	Digital Pin (e.g. D2)
GND	Ground	GND
B+	Load cell connection B+	-
B-	Load cell connection B-	-
A+	Load cell connection A+	-
A-	Load cell connection A-	-
E-	Load cell connection E-	-
E+	Load cell connection E+	-



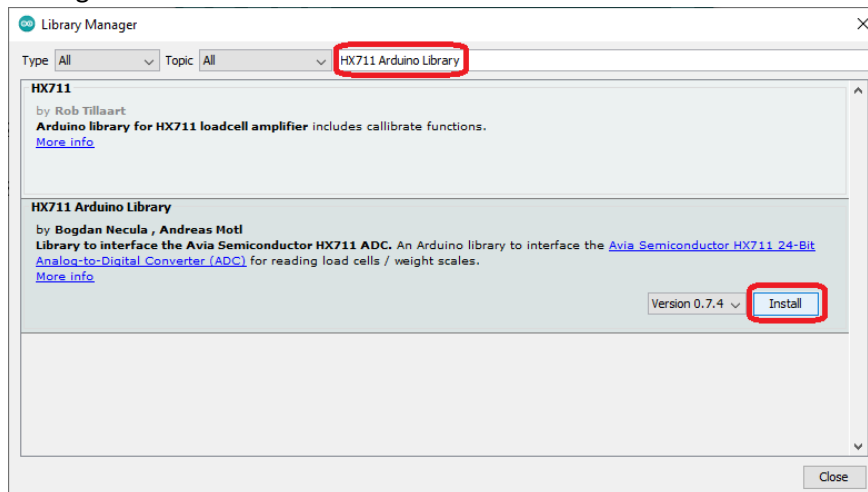
## Example program



You can download the example Arduino® program by going to the official Whadda github page: [github.com/WhaddaMakers/Electronic-scale-load-cell-sensor](https://github.com/WhaddaMakers/Electronic-scale-load-cell-sensor)

1. Click the “**Download ZIP**” link in the “**Code**” menu:



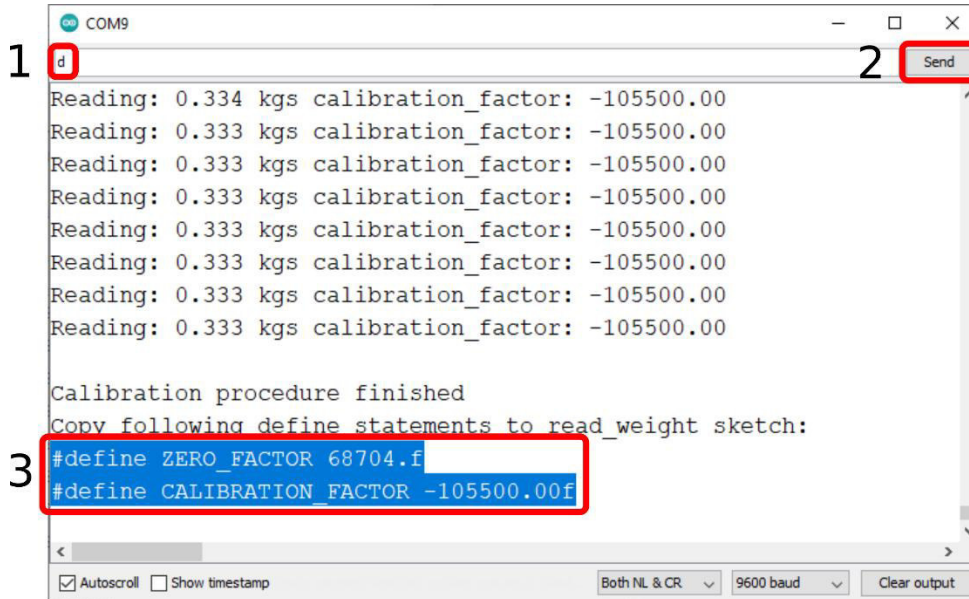
2. Unzip the downloaded file, and browse to the **calibrate\_sensor** folder. Open the **calibrate\_sensor** Arduino® sketch (**calibrate\_sensor.ino**) located in the folder.
3. Use the **Arduino Library manager** to install the **HX711 Arduino Library**, by going to Sketch > Include Library > Manage Libraries... , typing in **HX711 Arduino Library** in the search bar and clicking “**Install**”:



4. Connect your Arduino compatible board, make sure the correct Board and connection port are set in the tools menu, and hit **Upload** 
5. Open the serial monitor by clicking the serial monitor button , make sure the baudrate is set at **9600 baud**. No weight should be attached yet to the measuring side of the load cell.
6. Follow the on-screen instructions to generate the required calibration parameters.. Once a few zero weight readings have been received, put a known weight on the measuring end of the load cell. You can adjust the calibration parameter to get an accurate reading of your known weight by sending the + and – characters using the serial monitor, which will increase and decrease the calibration factor by a set amount respectively.



- Once the correct weight is showing, type in the **d** character (1) and press **send** (2) to indicate that the calibration process has finished. Select and copy the resulting **#define** statements containing the calibration parameters (3).





- Open the **read\_weight.ino** sketch, and paste the copied **#define** statements in lines 32 and 33:

```

28 #include "HX711.h"
29
30 // PASTE DEFINE STATEMENTS FROM CALIBRATION SKETCH HERE
31 // VVVVVVVVVVVVVVVVVVVVVVVVVVVVVVVVVVVVVVVVVVVVVVVVVVVVVVVVV
32 #define ZERO_FACTOR 68704.f
33 #define CALIBRATION_FACTOR -105500.00f
34 // ^^^^^^^^^^^^^^^^^^^^^^^^^^^^^^^^^^^^^^^^^^^^^^^^^^^^^^^^^^^
35
36 // HX711 circuit wiring
37 const int LOADCELL_DOUT_PIN = 2;
38 const int LOADCELL_SCK_PIN = 3;

```

- Upload**  the **read\_weight.ino** sketch, and open the serial monitor by clicking the serial monitor button , make sure the baudrate is set at **9600 baud**.  
The module will now be initialized with the new calibration factors, after which both averaged and single weight measurements will be shown in the serial monitor.



[whadda.com](http://whadda.com)



Modifications and typographical errors reserved - © Velleman Group nv. WPSE471  
Velleman Group NV, Legen Heirweg 33 - 9890 Gavere.