

# D-SUB H.D.SOLDER TYPE

## Specifications:

**Contact Resistance:** 30mΩmax.at DC 100mA

**Insulator Resistance:** 1000MΩmin.at DC 500V

**Current Rating:** 3 AMP

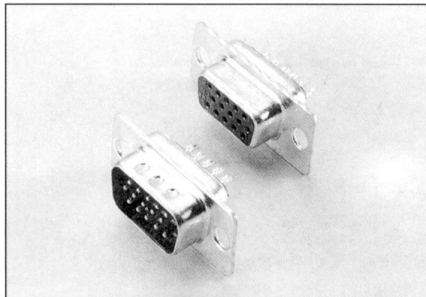
## Dielectric Withstanding

**Voltage:** AC 1000V For 1 minute

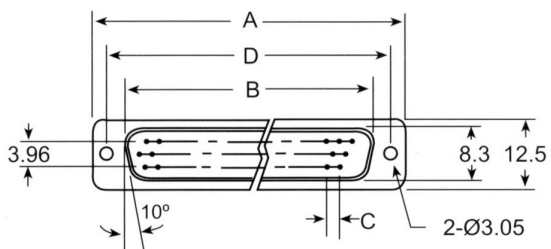
**Operating Temperature:** -55°C ~ +105°C

**Contact:** Brass or Phosphor Bronze

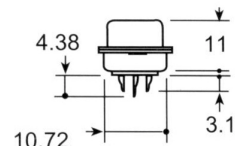
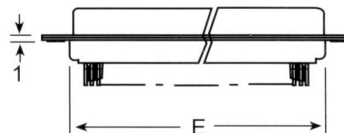
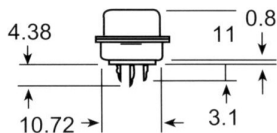
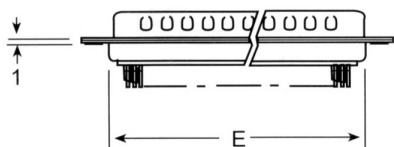
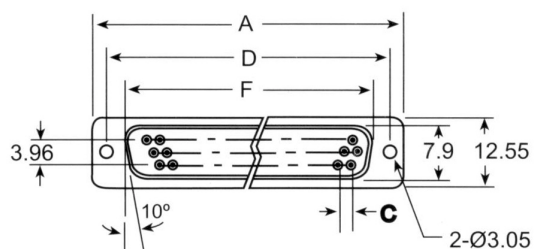
**Housing:** PBT & 30% Glass Fiber (UL 94V-O)



## MALE



## FEMALE



## Dimension

Position	A	B	C	D	E	F
15	30.8	16.9	2.29	24.99	19.3	16.3
26	39.1	25.3	2.29	33.32	27.5	24.7
44	53.0	39.0	2.29	47.04	41.3	38.4
62	69.3	55.4	2.41	63.50	57.7	54.8
78	66.9	52.86	2.41	61.11	55.3	52.34