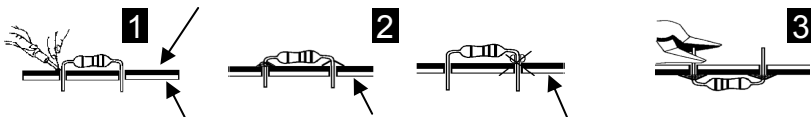


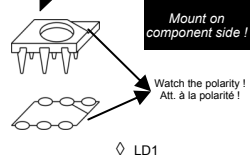
Solder side - Soldeerzijde - Côte de soudure - Lötseite - Lado de los soldadura



max. 40W

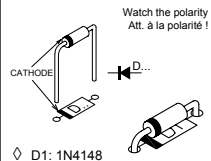
Component side - componentenzijde - Côte composants - Bauteileseite - Lado de los componentes

**START** 1 RGB LED



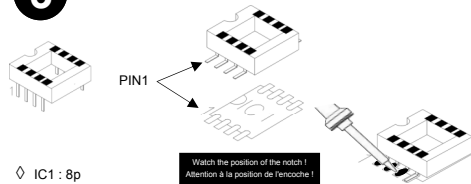
◇ LD1

2 Diode



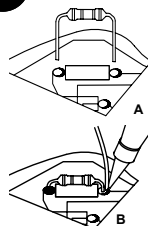
◇ D1: 1N4148

3 IC - socket



◇ IC1 : 8p

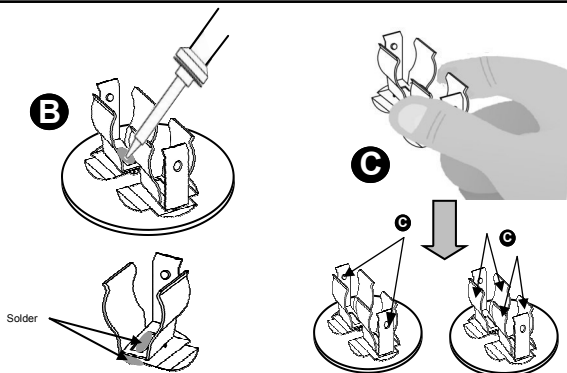
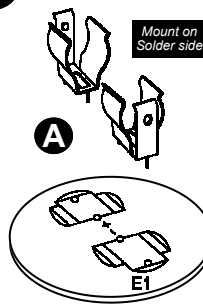
4 Resistor - Weerstand - Résistance - Widerstand - Resistencia - Mot tand - Vastus - Resistenze



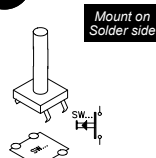
Component side - componentenzijde - Côte composants - Bauteileseite - Lado de los componentes

- ◇ R1 : 100K (Brown, Black, Yellow) - (Bruin, zwart, Geel) - (Brun, noir, Jaune) - (Braun, Schwarz, Gelb) - (Brun, Svart, Gul) - (Ruskea, Musta, Keltainen) - (Marrón, Negro, Amarillo) - (Castanho, Preto, Amarelo) - (Marrone, Nero, Giallo)
- ◇ R2 : 220 (Red, Red, Brown) - (Rood, Rood, Bruin) - (Rouge, Rouge, Brun) - (Rot, Rot, Braun) - (Röd, Röd, Brun) - (Punainen, Punainen, Ruskea) - (Rojo, Rojo, Marrón) - (Encarnado, Encarnado, Castanho) - (Rosso, Rosso, Marrone)
- ◇ R3 : 470 (Yellow, Purple, Brown) - (Geel, Paars, Bruin) - (Jaune, Violet, Brun) - (Gelb, Violet, Braun) - (Gul, Lila, Brun) - (Keltainen, Purppura, Ruskea) - (Amarillo, Morado, Marrón) - (Amarelo, Violeta, Castanho) - (Giallo, Viola, Marrone) - (Gul, Violet, Brun)
- ◇ R4 : 1K (Brown, Black, Red) - (Bruin, Zwart, Rood) - (Brun, Noir, Rouge) - (Braun, Schwarz, Rot) - (Brun, Svart, Röd) - (Ruskea, Musta, Punainen) - (Marrón, Negro, Rojo) - (Castanho, Preto, Encarnado) - (Marrone, Nero, Rosso)

5 Batteryholder

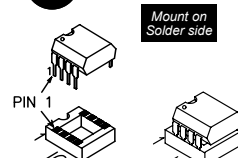


6 Push button



◇ SW1

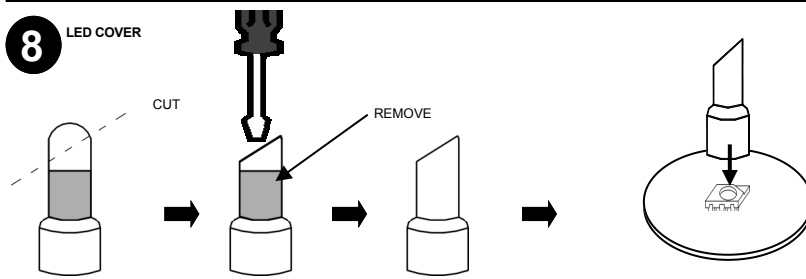
7 IC



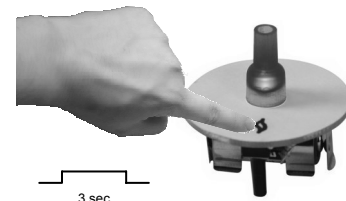
◇ VMK184 (programmed PIC10F200)



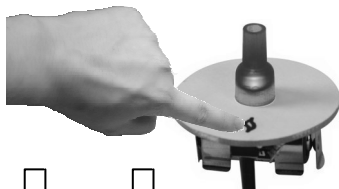
8 LED COVER



Automatic colour change



OFF



Next fixed colour

