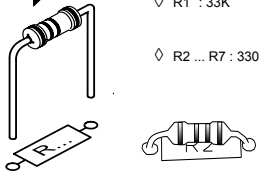


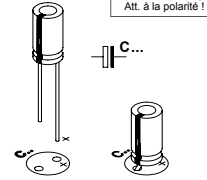
**START 1**

Resistor - Weerstand - Résistance - Widerstand - Resistencia - Motstand - Vastus - Resistenze



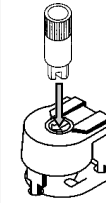
- ◇ R1 : 33K (Orange, Orange, Orange) - (Oranje, Oranje, Oranje) - (Oranssi, Oranssi, Oranssi) - (Naranjado, Naranjado, Naranjado) - (Laranja, Laranja, Laranja) - (Aranciato, Aranciato, Aranciato)
- ◇ R2 ... R7 : 330 (Orange, Orange, Brown) - (Oranje, Oranje, Bruin) - (Orange, Orange, Brun) - (Orange, Orange, Braun) - (Orange, Orange, Brun) - (Oranssi, Oranssi, Ruskea) - (Naranjado, Naranjado, Marrón) - (Laranja, Laranja, Castanho) - (Aranciato, Aranciato, Marrone)

**11** Electrolytic capacitor

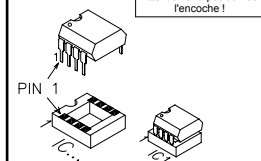


◇ C2 : 100µF / 25V

**12** Axe



**13** IC

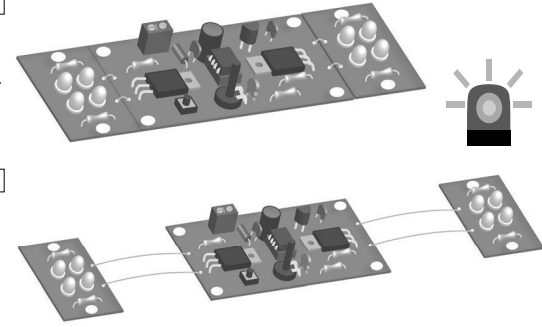


◇ IC1 : VMK180 (programmed PIC12F629)

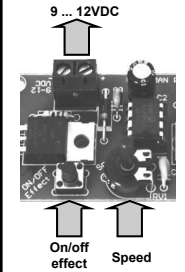


**14** LED-board

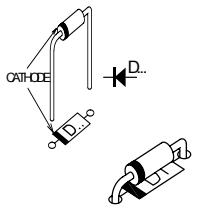
- A Jumper**
- or of oder o
- ◇ A (+) 2x
  - ◇ C (-) 2x
- B wire (4x)**
- ◇ A (+) 2x
  - ◇ C (-) 2x



**15** Connection

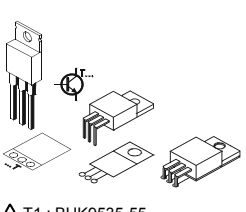


**2** Diodes



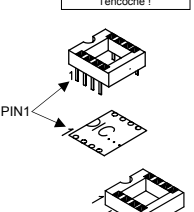
◇ D1 : 1N4007

**3** Transistor



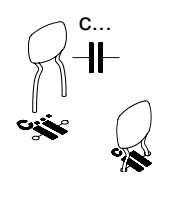
◇ T1 : BUK9535-55  
◇ T2 : BUK9535-55

**4** IC sockets



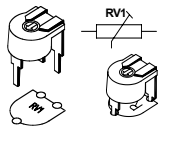
◇ IC1 : 8p

**5** Ceramic capacitors



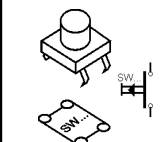
◇ C1 : 100pF (101)  
◇ C3,C4 : 100nF (104)

**6** Trimmer



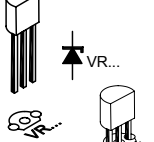
◇ RV1 : 22K "speed"

**7** Push button



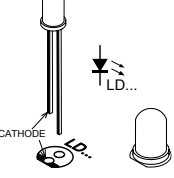
◇ SW1 : on/off - effect

**8** Voltage regulator



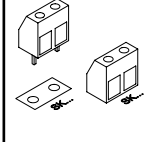
◇ VR1 : UA78L05

**9** LEDs



◇ LD1 ... LD8 : 5mm

**10** Terminal block



◇ SK1

**16**

