

START

1 Resistor - Weerstand

◇ R1,R2 : 1K (Brown, Black, Red) -(Bruin, Zwart, Rood) -(Brun, Noir, Rouge) -(Braun, Schwarz, Rot) -(Brun, Svart, Röd) -(Ruskea, Musta, Punainen) -(Marrón, Negro, Rojo) -(Castanho, Preto, Encarnado) -(Marrone, Nero, Rosso)

◇ R3,R4 : 10K (Brown, Black, Orange) -(Bruin, Zwart, Oranje) -(Brun, noir, Orange) -(Braun, Schwarz, Orange) -(Brun, Svart, Orange) -(Ruskea, Musta, Oranssi) -(Marrón, Negro, Naranjado) -(Castanho, Preto, Laranja) -(Marrone, Nero, Aranciatto)

◇ R5,R6,R7,R8 : 100 (Brown, Black, Brown) -(Bruin, zwart, Brown) -(Brun, noir, Brun) -(Braun, Schwarz, Braun) -(Brun, Svart, Brun) -(Ruskea, Musta, Ruskea) -(Marrón, Negro, Marrón) -(Castanho, Preto, Castanho) -(Marrone, Nero, Marrone)

◇ R9,R10 : 220 (Red, Red, Brown) -(Rood, Rood, Bruin) -(Rouge, Rouge, Brun) -(Rot, Rot, Braun) -(Röd, Röd, Brun) -(Punainen, Punainen, Ruskea) -(Rojo, Rojo, Marrón) -(Encarnado, Encarnado, Castanho) -(Rosso, Rosso, Marrone)

2 LDR

◇ LDR1
◇ LDR2

3 Switch

◇ SW1
◇ SW2

4 Hor. trimmer

◇ RV1 : 22K (25)
◇ RV2 : 10K
◇ RV3 : 10K

5 TRANSISTOR

◇ T1 : BC547C
◇ T2 : BC547C
◇ T3 : BC547C
◇ T4 : BC547C
◇ T5 : BC547C
◇ T6 : BC547C
◇ T7 : BC557C
◇ T8 : BC557C

6 ELECTROLYTIC

Watch the polarity !
Att. à la polarité !

◇ C1 : 22µF
◇ C2 : 22µF

7 Battery holder

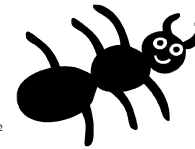
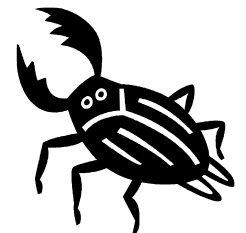
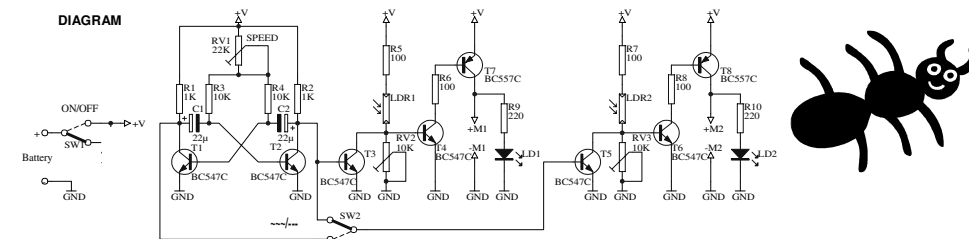
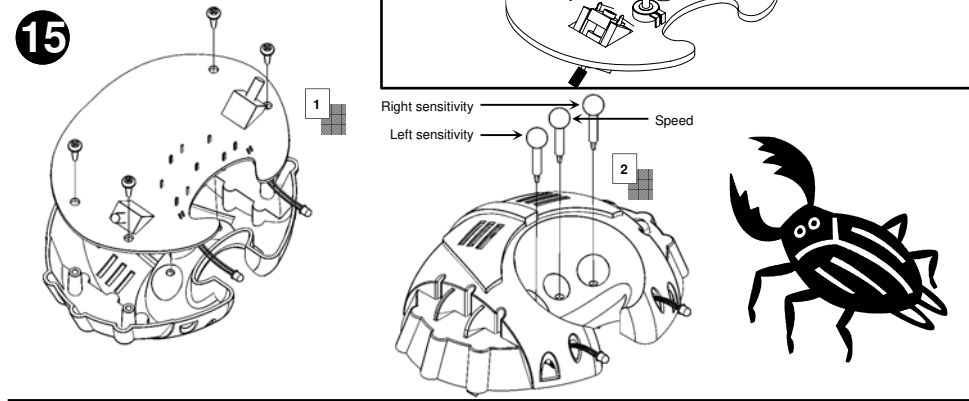
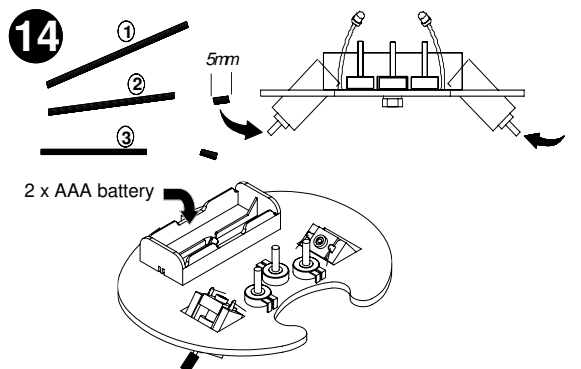
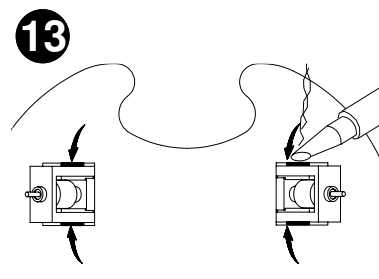
Red-Rood-Rouge-Rot
Röd-Punainen-Rojo-Encarnado-Rosso

8 LED

Watch the polarity !
Att. à la polarité !

◇ LD1
◇ LD2

9 DIODE



MK165 manual - edition 1 (révisé02)