

START

1

Resistor -
Weerstand -
Résistance -
Widerstand -
Resistencia -
Motstånd -
Vastus -
Resistenze

◇ R1... R4: 0 Ohm

(Black) -(zwart) -(noir) -(Schwarz) -(Svart) -(Musta) -(Negro) -(Preto) -(Nero)

◇ R5... R17: 1K

Brown, Black, Red) -(Bruin, Zwart, Rood) -(Brun, Noir, Rouge) -(Braun, Schwarz, Rot) -(Brun, Svart, Röd) -(Ruskea, Musta, Punainen) -(Marrón, Negro, Rojo) -(Castanho, Preto, Encarnado) -(Marrone, Nero, Rosso)

◇ R18, R19: 3K3

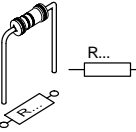
(Orange, Orange, Red) -(Oranje, Oranje, Rood) -(Orange, Orange, Rouge) -(Orange, Orange, Rot) -(Orange, Orange, Röd) -(Oranssi, Oranssi, Punainen) -(Naranjado, Naranjado, Rojo) -(Laranja, Laranja, Encarnado) -(Aranciato, Aranciato, Rosso)

◇ R20... R28: 1K8

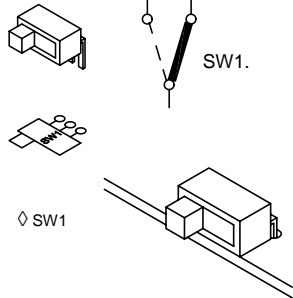
(Brown, Grey, Red) -(Bruin, Grijs, Rood) -(Brun, Gris, Rouge) -(Braun, Grau, Rot) -(Brun, Grau, Röd) -(Ruskea, Harmaa, Punainen) -(Marrón, Gris, Rojo) -(Castanho, Cinzento, Encarnado) -(Marrone, Grigio, Rosso)

◇ R29, R30: 100K

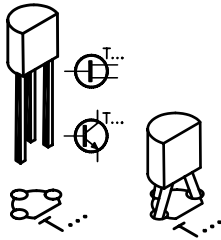
(Brown, Black, Yellow) -(Bruin, Zwart, Geel) -(Brun, Noir, Jaune) -(Braun, Schwarz, Gelb) -(Brun, Svart, Gul) -(Ruskea, Musta, Keltainen) -(Marrón, Negro, Amarillo) -(Castanho, Preto, Amarelo) -(Marrone, Nero, Giallo)



2 SWITCH



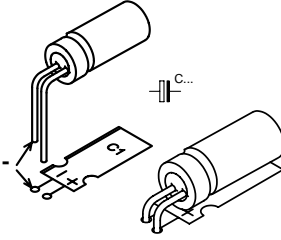
3 TRANSISTORS



◇ T1 : BC547

◇ T2 : BC547

4 ELECTROLYTIC CAPACITORS



◇ C1 : 10µF

◇ C2 : 10µF

Watch the polarity !

Att. À la polarité !

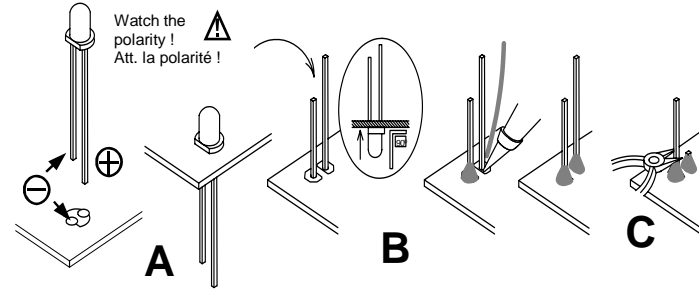
5

LED 3mm

◇ 3X = Green, Groen, Vert, Grün, Grön, Vihreä, Verde

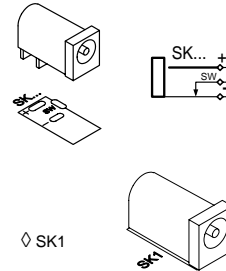
◇ 72X = Yellow, Geel, Jaune, Gelb, Gul, Keltainen, Amarillo, Amarelo, Giallo.

◇ 8X = Red, Rood, Rouge, Rot, Röd, Punainen, Rojo, Encarnado, Rosso.



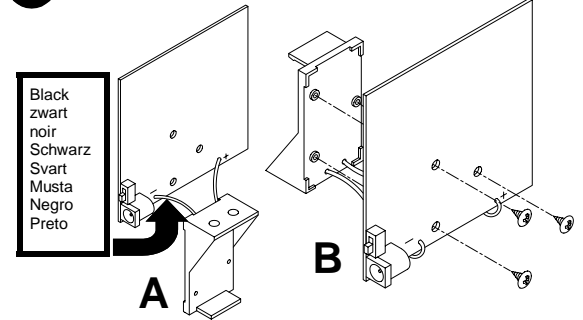
6

POWER JACK



7

BATTERY HOLDER



Black
zwart
noir
Schwarz
Svart
Musta
Negro
Preto

