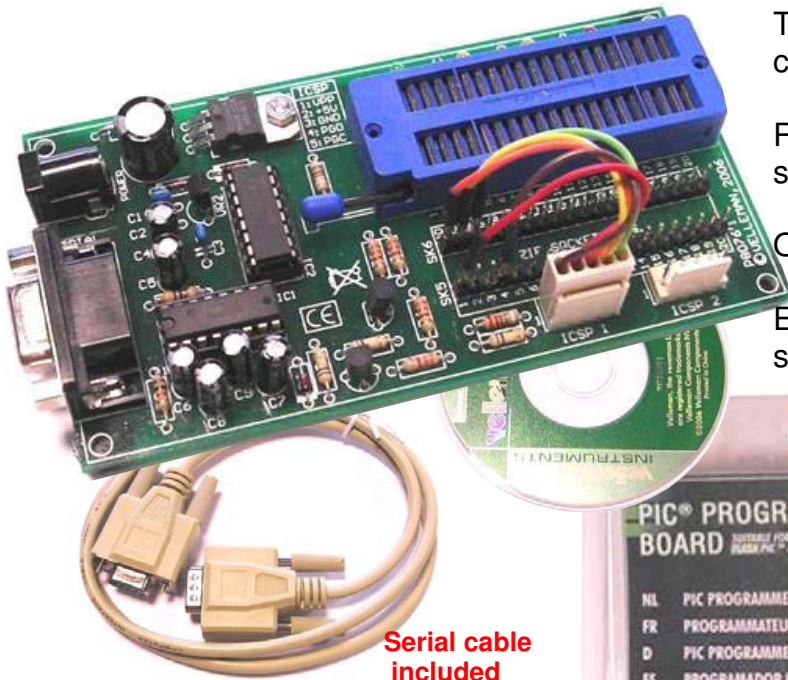




## PIC™ PROGRAMMER BOARD

### VM134



Serial cable included

This board can program a wide range of Microchip® PIC™ microcontrollers\*.

Regularly updated device list, through our web site.

Onboard configurable 40 pin. ZIF socket!

Easy to use programming PICprog2006™ software included.

### Specifications:

- Power supply: 15Vdc, / 300mA, adapter (Ex. [PS1508](#))
- Dimensions: 132x65x20mm
- Serial port connector: 9 p. SUBD.
- On board "In Circuit Serial Programming" connector.
- Minimum system requirements:
  - IBM Compatible PC, Pentium or better
  - Windows™ 98/ME/NT/2000/XP
  - CDROM drive
  - Free serial RS232 port required \*

\* USB to serial converter cables have very limited compatibility and are not supported.

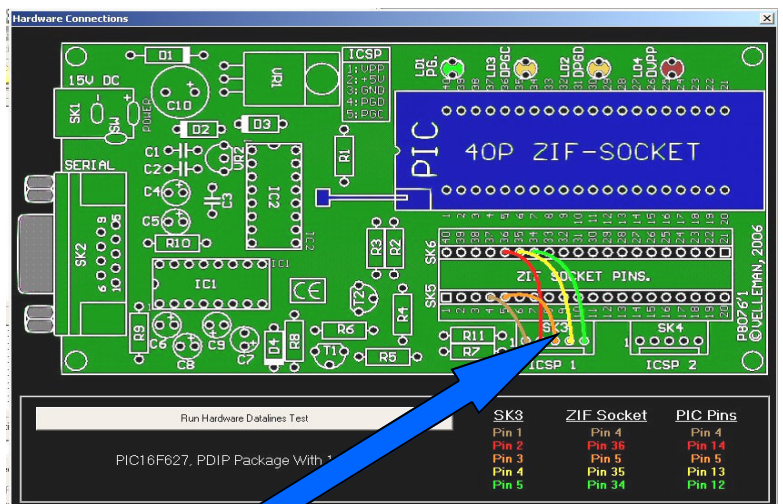
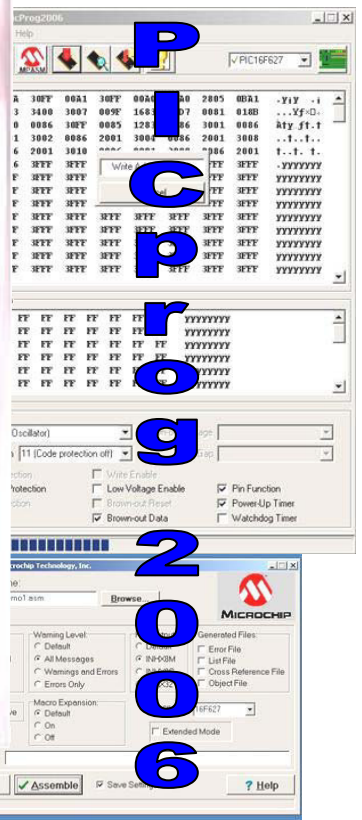
Currently supported controllers (check web site for updates)

PIC10F200  
PIC12C508A  
PIC12CE518

PIC16F;  
54,84A, 27, 627A, 628, 628A, 630, 648A, 676, 785, 870, 871, 872, 873, 873A, 874, 874A, 876, 876A, 877, 877A.

PIC18F;  
1220, 1320, 2220, 2320, 4220, 4320, 2221, 2321, 2410, 2420, 2455, 2480, 2510, 2515, 2520, 2525, 2550, 2580, 2585, 2610, 2620, 2680, 4221, 4321, 4410, 4420, 4455, 4480, 4510, 4515, 4520, 4525, 4550, 4580, 4585, 4610, 4620, 4680.

(\*) PIC and Microchip are registered trade marks



EASY DEVICE SELECTION USING PATCH JUMPERS

