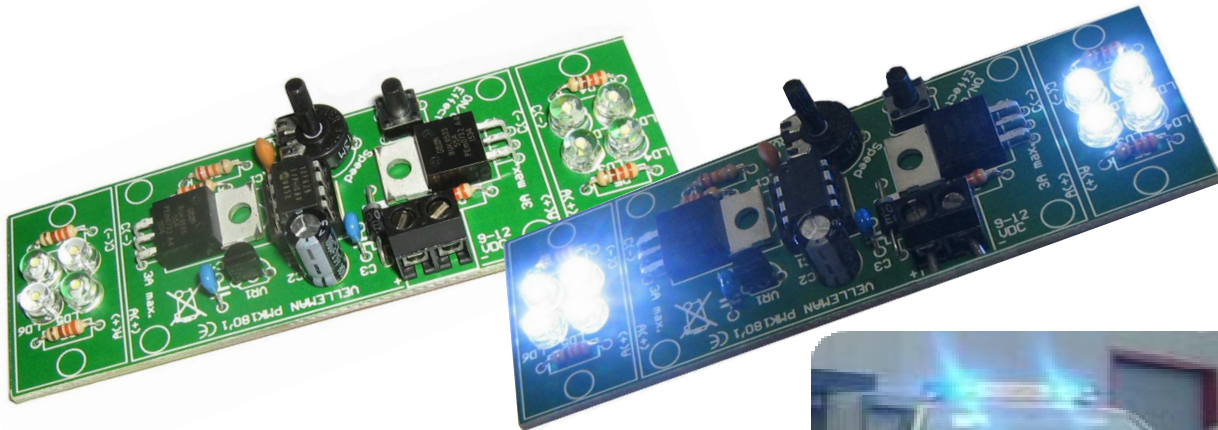




2 Channel Hi-Power Led Flasher

MK180



20.000mcd

Hi-power white leds supplied

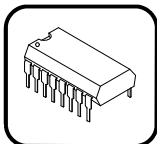


2 x 3A

Hi-power MOSFET outputs



- 7 different flash effects
- Single-button selection
- Adjustable speed



Memory for last selected function

Applications:

Automotive:

Priority vehicles, car shows, etc...

Alarm systems:

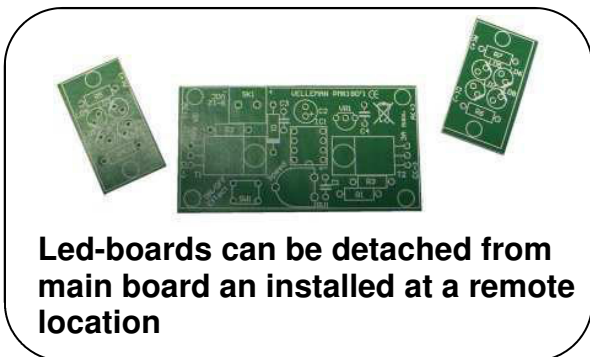
Add a visual warning to alarm sirens

Attention grabber:

For displays, stores, trade shows, etc...

Disco effect: Strobe effect. Multiple units enhance the effect

Use the unit with any kind of leds: low current, hi-power, led strips, clusters, etc...



Led-boards can be detached from main board and installed at a remote location

Technical:

Supply voltage: 12V (9 to 14Vdc)

Outputs 3A/Channel max.

Dimensions: main board: 65x33mm h: 20mm
led board: 18x33mm h: 12mm

