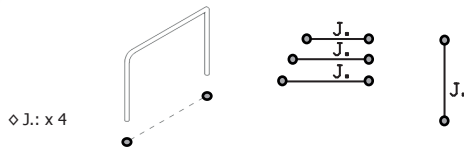
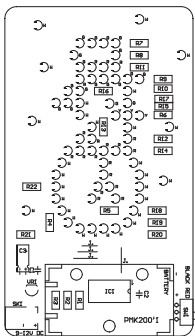


1 Jumper - draadbrug - cavalier - jumper - saltador

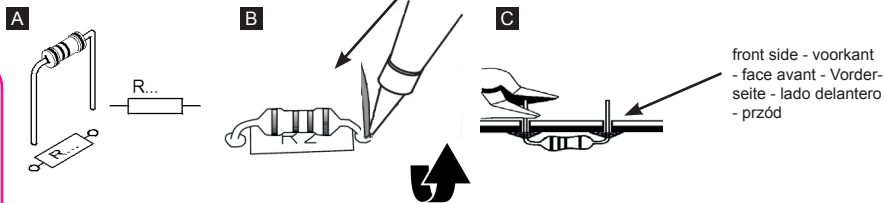


◇ J.: x 4

solder side - côté soudure - soldeer zijde - Lötseite - lado de la soldadura - strona lutownicza



2 Resistor - Weerstand - Résistance - Widerstand - Resistencia - Motstand - Vastus - Resistenze



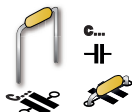
front side - voorkant - face avant - Vorderseite - lado delantero - przód

- ◇ R1 ... R4: 4K7 (yellow, purple, red) - (geel, paars, rood) - (jaune, violet, rouge) - (gelb, lila, rot) - (gul, lila, röd) - (keltainen, violetti, punainen) - (amarillo, púrpura, rojo) - (amarelo, roxo, vermelho) - (giallo, viola, rosso) - (Żółty, fioletowy, czerwony)
- ◇ R5 ... R10: 330 (orange, orange, brown) - (oranje, oranje, bruin) - (orange, orange, brun) - (orange, orange, braun) - (orange, orange, brun) - (oranssi, oranssi, ruskea) - (naranjado, naranjado, marrón) - (laranja, laranja, marrom) - (aranciato, aranciato, marrone) - (Pomarańczowy, pomarańczowy, brązowy)
- ◇ R11 ... R13: 470 (yellow, purple, brown) - (geel, paars, bruin) - (jaune, violet, brun) - (gelb, violet, braun) - (gul, lila, brun) - (keltainen, purppura, ruskea) - (amarillo, morado, marrón) - (amarelo, violeta, castanho) - (giallo, viola, marrone)
- ◇ R14: 680 (blue, gray, brown) - (blauw, grijs, bruin) - (bleu, gris, brun) - (blau, grau, braun) - (blå, grå, brun) - (sininen, harmaa, ruskea) - (azul, gris, marrón) - (azul, cinza, marrom) - (blu, grigio, marrone) - (niebieski, szary, brązowy)
- ◇ R15 ... R22: 22K (red, red, orange) - (rood, rood, oranje) - (rouge, rouge, orange) - (rot, rot, orange) - (röd, rött, orange) - (punainen, punainen, oranssi) - (rojo, rojo, naranja) - (vermelho, vermelho, laranja) - (rosso, rosso, arancione) - (czerwony, czerwony, pomarańczowy)

front side - voorkant - face avant - Vorderseite - lado delantero - przód

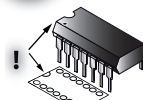


3 Ceramic capacitor



◇ C1, C2: 100nF (104)

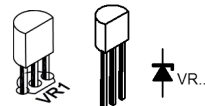
4 IC



Watch the notch!
Att. l'entaille!

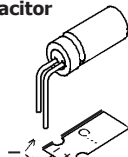
◇ IC1: VMK200 (programmed PIC16F630 or PIC16F1503)

5 Voltage regulator



◇ VR1: UA78L05

6 Capacitor



◇ C3: 47µF 25V

Watch the polarity!
Att. la polarité!

7 On/off switch



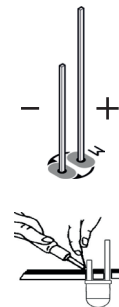
solder side - côté soudure - soldeer zijde - Lötseite - lado de la soldadura - strona lutownicza

◇ SW1: ON

8 LED

- ◇ W: x 29 white - wit - blanc - weiß - vit - valkoinen - blanco - branco - bianco - biały
- ◇ G: x 16 green - groen - vert - grün - grön - vihreä - verde - zielony - rosso - czerwony
- ◇ R: x 19 red - rood - rouge - rot - röd - punainen - rojo - vermelho - rosso - czerwony
- ◇ B: x 2 blue - blauw - bleu - blau - blå - sininen - azul - azul - blu - niebieski
- ◇ Y: x 3 yellow - geel - jaune - gelb - gul - keltainen - amarillo - amarelo - giallo - Żółty

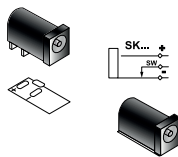
Total = 69 LEDs



Watch the polarity!
Att. la polarité!

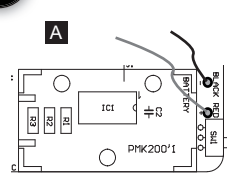
front side - voorkant - face avant - Vorderseite - lado delantero - przód

9 DC socket



◇ SK1: DC power connector socket

10 Battery holder



B

