

VMBHIS Quick Guide

1 INTRODUCTION

This document explains the installation and initial configuration of the VMBHIS Home Center.

For a detailed explanation of all the Home Center possibilities, see the “Home Center User Guide” (see “More information” on p. 6).

2 CONTENT

In the packaging of the VMBHIS Home Center server you'll find the following articles:

- the server module VMBHIS



- a short manual
- the necessary cables, consisting of:



- a power cable + optional power plug
- a network cable
- a USB cable

The Home Center server software (license included) is already preinstalled on the VMBHIS.

3 CONNECTION

The VMBHIS server module must be connected to both your Velbus domotics system and to your LAN. It must also be connected to the mains voltage.

Preferably, do not connect your VMBHIS module until you have fully programmed and configured your Velbus installation. In this way all settings and channels will be correctly read at the first use.

Connect the cables in the correct order:

1. first the USB cable and network cable
2. and last the power cable (mains voltage)

CONNECTION TO THE VELBUS INSTALLATION

To connect the VMBHIS with your Velbus installation you can use the VMB1USB or VMBRSUSB module and a USB cable.

CONNECTION TO YOUR LAN

Connect your VMBHIS to your local network using a standard network connection (RJ45).

CONNECTION TO MAINS VOLTAGE

Connect the power cable (mains voltage) always last, **after** the network cable and USB cable are connected. In this way the VMBHIS will detect both the network and the Velbus system at startup.

Make sure you have a **working internet connection** before you connect the VMBHIS to the mains voltage, otherwise the license will not be activated. If the Velbus installation is at a location without an internet connection, you have to activate the VMBHIS license beforehand, where an internet connection is available.

Insert one end of the supplied power cable in the VMBHIS, and then plug it into the socket. The VMBHIS will be activated immediately.

The server will activate its license in the background, and the date this happens is the start date of 1 year of free updates.

If it's the first time a Velbus installation is connected to the VMBHIS, it will read all modules and automatically sort them into groups (zones).

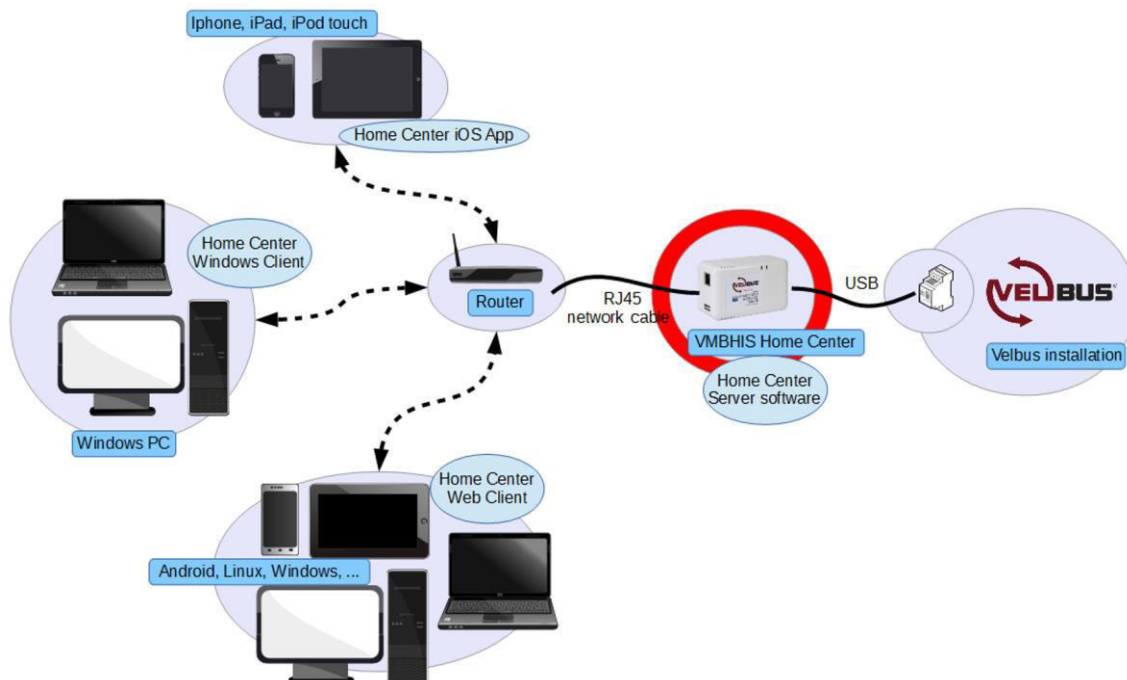
As soon as the activation and first scan are completed (**wait approximately 5 min. after connecting the power cord**), the VMBHIS is ready to use.

4 FIRST USE

When the license activation and first scan are completed, you can immediately start to operate your Velbus installation, using devices connected to your LAN:

- **iPhone, iPod touch, iPad** using the free **Home Center iOS App** (free to download at the App Store)
- **Windows PCs** using a **web browser** (latest Firefox or Chrome) or **Home Center Windows Client** (included)
- any other device with a Firefox or Chrome **web browser** (Android, Mac, Linux, Windows, ...)

These devices communicate via your LAN with the Home Center server (the VMBHIS module), which in turn communicates with the Velbus installation (see illustration below).



5 OPERATION

You can approach your Home Center in 3 ways:

- A. via a **web browser**
- B. via the Windows program **Home Center Windows Client**
- C. via the Home Center **iOS App** for iPad, iPhone and iPod touch

A. OPERATION VIA WEB BROWSER (ANDROID, LINUX, MAC, WINDOWS, ...)

Using a normal **web browser** (Firefox, Safari or preferably Chrome) you can log into Home Center and operate your Velbus installation.

To do this, start the web browser, type in the IP-address of your Home Center server in the address bar and push Enter. The standard login credentials are:

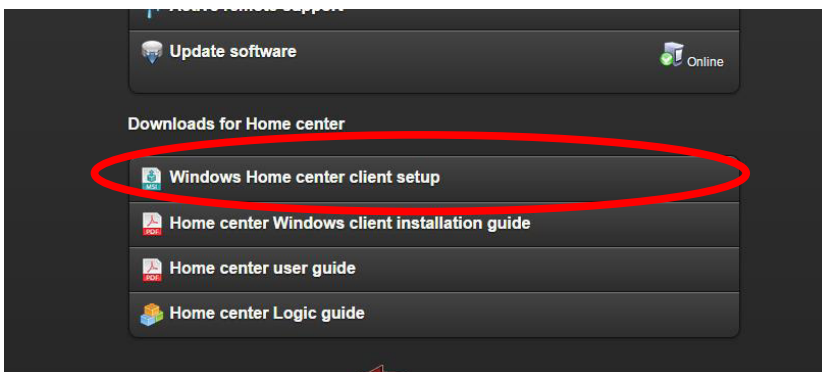
- username: admin
- password: admin

If you don't know the IP-address of your Home Center server, please follow the steps in "Appendix 1: Find out the IP-address of your Home Center server" on p.6.

B. OPERATION VIA THE WINDOWS CLIENT

The **Home Center Windows Client** is a Windows program to be installed on a Windows PC.

You can find the setup file on the WMBHIS server. To do so, login via a web browser (see above) and go to the **Settings** page. On that page, click on **Windows Home Center client setup** (see image below).



The file "hc_client.zip" will be copied to your PC. Open this file and double click on **setup**. The installation wizard will guide you through the rest of the process.

As soon as the Home Center Windows Client is installed, you can start it via the Windows Start menu > Home Center.

With the Home Center Windows Client, you can operate your Velbus installation and configure the layout of the zones which are also visible in the other clients.

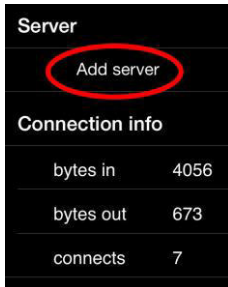
C. OPERATION VIA IPHONE, IPAD OR IPOD TOUCH

The **Home Center iOS App** for iPhone, iPod touch and iPad can be downloaded for free from the App Store.

To use the app for the first time, execute the following steps:

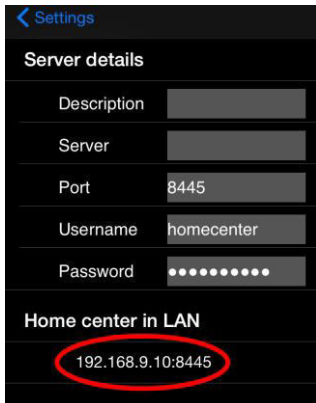
- make sure that your iOS device is connected to your LAN
- start the Home Center iOS App and go to the **Settings** page (via the gear icon)

- select Add server



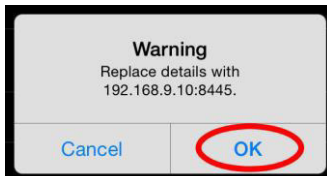
Server	
Add server	
Connection info	
bytes in	4056
bytes out	673
connects	7

- the App automatically searches for available Home Center servers and displays them under Home Center in LAN



Server details	
Description	
Server	
Port	8445
Username	homecenter
Password	••••••••
Home center in LAN	
192.168.9.10:8445	

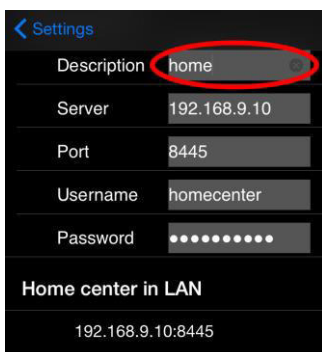
- Tap the IP-address of the detected Home Center. Push OK in the pop up Warning: replace details with.... The IP-address will automatically be copied to the Server field.



Warning
Replace details with
192.168.9.10:8445.

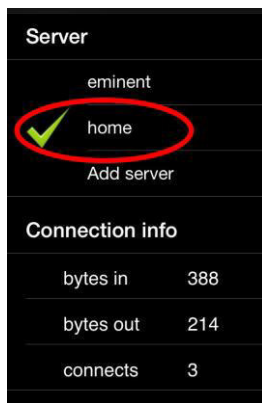
Cancel OK

- Enter a name for the Home Center server in the box Description (eg. "home")



Server details	
Description	home
Server	192.168.9.10
Port	8445
Username	homecenter
Password	••••••••
Home center in LAN	
192.168.9.10:8445	

- Tap the blue shortcut < Settings (top left). On the Settings page, tap the name of the server you wish to connect to. When the green checkmark appears next to the server, it means it's ready for use.



- Select one of the zones in the menu bar at the bottom of the Home Center iOS App to operate your Velbus installation. (To change the zones or other settings, see the Home Center Web Client and Home Center Windows Client above).

COMPARISON OF THE DIFFERENT CLIENTS

- the **most complete user interface** is provided by the **web browser client**. All functionalities of Home Center (both configuration and operation) are available here, except the zone management (see below).
- The **Home Center Windows Client** is the only client¹ where you can configure the **layout of the zones and menu bar**. From here you can create, delete and modify zones. You can also operate your Velbus installation using this client.
- With the **Home Center iOS App** you can **operate** your Velbus installation **from iPad, iPhone or iPod touch**. It's not possible to configure Home Center using the iOS App.

In the "Home Center User Guide" there's a detailed explanation of how to configure and operate Home Center (see "More information" p.6).

6 USER MANAGEMENT

The default username and password for Home Center is "admin" (without the quotation marks). For security reasons, it's strongly recommended to change the password as soon as possible.

Depending on the version of Home Center, it's possible that a second account exists, with both username and password "homecenter". For security reasons, also change the password for this account.

To make changes regarding **user rights**, go to User Management on the **Settings** page of the Home Center Web Client. Here you can decide who gets which rights. **Passwords** are configured or changed here as well.

You can find more information in the "Home Center user guide" (see "More information" p.6).

7 SONOS INTEGRATION

Home Center will automatically detect your Sonos[®] installation when available. Using the logical module of Home Center, you can connect it to your Velbus installation.

The glass touch panels with OLED display (VMBGPODB and VMBGPODW) can show which song is currently playing. All Velbus button interfaces (push buttons and touch panels) can be configured in Home Center for the basic operation of your Sonos[®] system (play, pause, next, previous, volume up, volume down and mute).

For more information about the Home Center logical module, log into Home Center via the Home Center Web Client (see "A. Operation via web browser" on page 3) and download the "Home Center logic guide" from the "Settings" page.

¹ At the time of formatting this document (Home Center version 2.7.3)

8 MORE INFORMATION

The **“Home Center User Guide”** is an extended manual regarding installation, configuration and operation of the Home Center. At all times you can download the last version from within the VMBHIS Home Center server itself:

- log into the Home Center Web Client
- go to the **Settings** page
- click on **Home Center user guide**

For more information about Home Center, go to www.homecenter.be or go to www.velbus.eu > Producten > VMBHIS.

9 APPENDICES

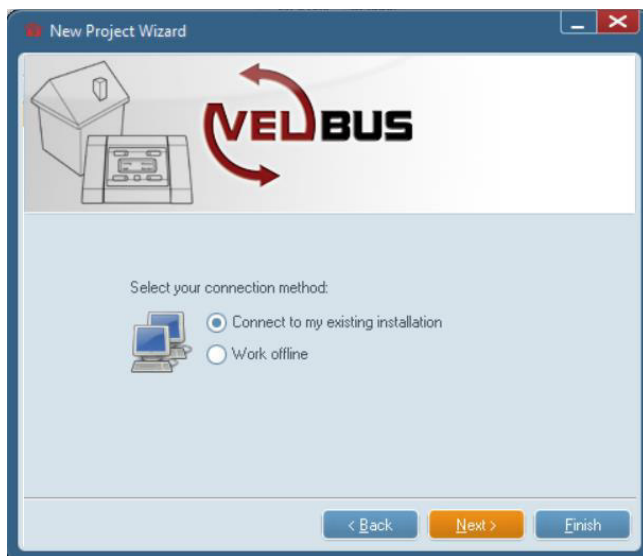
APPENDIX 1: FIND OUT THE IP-ADDRESS OF YOUR HOME CENTER SERVER

You can find out the IP-address of your Home Center server in the following ways:

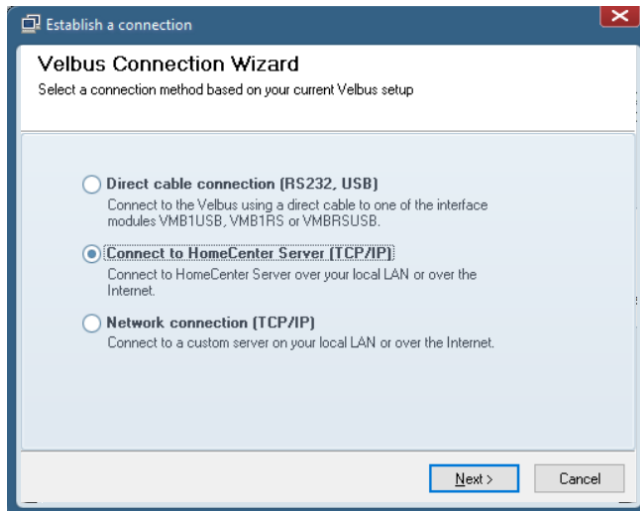
A. Using Velbuslink (Windows)

You can find out the IP-address of your Home Center server in Velbuslink, the Windows configuration program of your Velbus installation. You can download it for free at www.velbus.eu > Support > Downloads > Velbuslink.

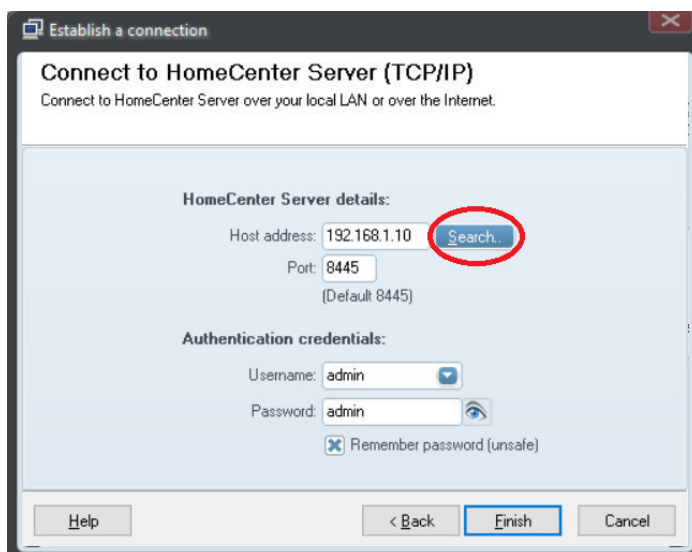
- Start Velbuslink
- Open a project or create a new one
- When you chose to create a new project in the previous step, you will be asked which connection method you want. Choose **Connect to my existing installation** and click **Next**



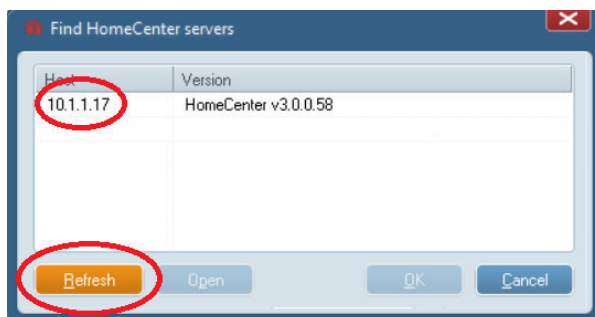
- In the following screen, choose **Connect to HomeCenter Server (TCP/IP)** and press **Next**



- In the following screen press **Search**



- Click on **Refresh**. A list with available Home Center servers appears. In the column “Host” you can see the IP-address of the Home Center server.

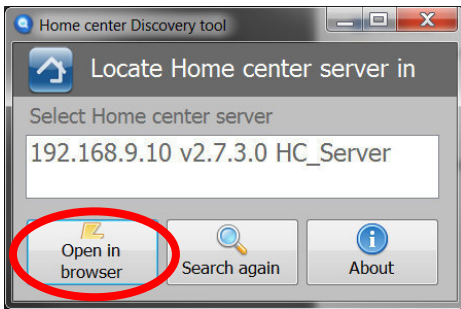


B. Via the Home Center Discovery Utility

For Windows

Download the Home Center Discovery Utility at the Velbus website (www.velbus.eu > Support > Downloads > VMBHIS), or via www.homecenter.be. After starting the utility you can see the available (correctly started) Home Center servers.

Select the server and click **Open in browser**.



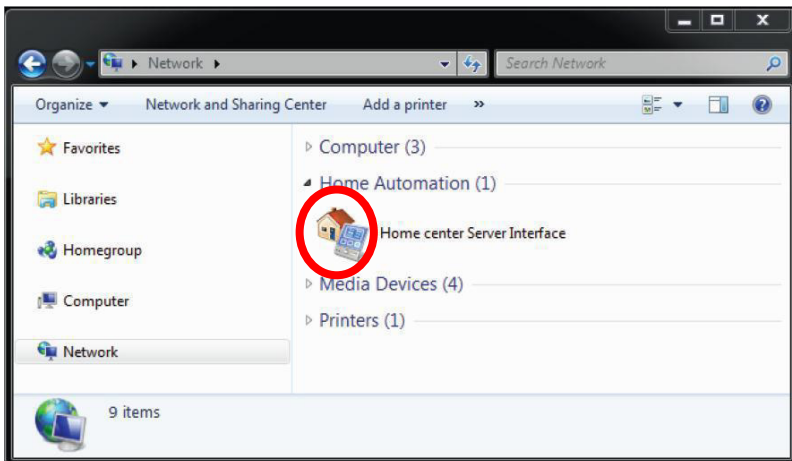
For Android

Go to Google Play and download the “HC Discovery” of Stijnen Solutions. The direct link is <https://play.google.com/store/apps/details?id=be.stijnen.hcdiscovery>.

C. Using Windows Explorer (Windows 7 and newer)

If you have a standard home network and Windows 7 or higher, the VMBHIS is automatically detected.

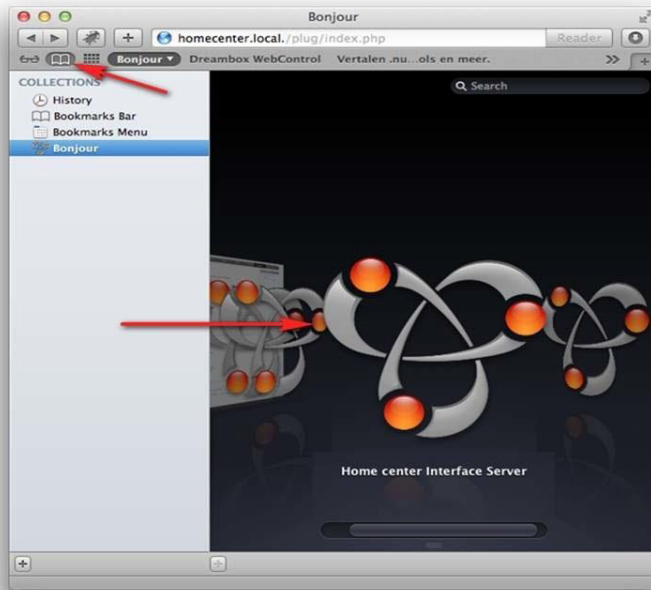
In Windows 7 for example, in Windows Explorer you can select **Network**. Double click on the **Home Center server interface** icon. A web browser window will open with the correct IP-address filled in.



D. Via Bonjour in MacOS X

If you're using MacOS X and you have a standard home network, you can find the VMBHIS Home Center server via Bonjour.

Open Safari and click on Bookmarks (the “open book” icon, see print screen below). Then double click on **Home Center Interface Server**.

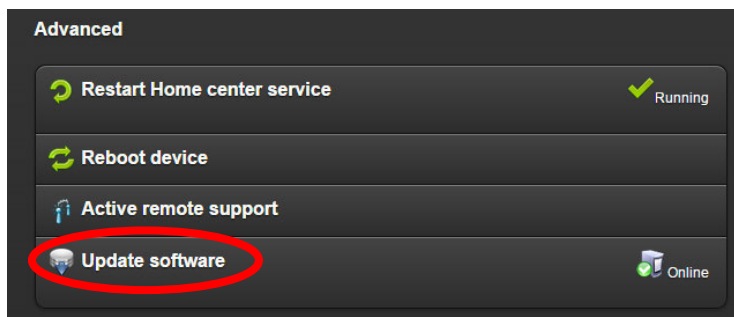


APPENDIX 2: SOFTWARE UPDATES

When there are updates available for your Home Center software, you will be notified on the login page of the Home Center Web Client below the **Login** button.

To install the update:

- Make sure you have a working internet connection
- In the Home Center Web Client, go to the **Settings > Advanced** page and click on **Update software** (see print screen below)



- the latest Home Center server software version will be downloaded and installed on the VMBHIS. This happens in the background. In the meanwhile, you can continue working with other applications on your PC, but it's recommended not to use Home Center software during 5 minutes (while the update is being installed on the VMBHIS).
- the update is finished after 5 minutes. Your VMBHIS now runs the latest software version.
- on your VMBHIS server there's a new version of Home Center Windows Client available as well.

The Home Center Windows Client has to be the same version as the Home Center server software at all times. With every new Home Center update, please install the new Home Center Windows Client (see "B. Operation via the Windows Client" on page 3)

APPENDIX 3: PROBLEM SOLVING

Should you experience problems during the installation or first use of your VMBHIS Home Center server, try the following steps, **in the order as they're described**:

1. Close all Home Center Clients (Home Center Windows Clients, Home Center iOS Apps and web browser interfaces)

2. Unplug the VMBHIS from the mains socket
3. Close all programs and reboot your PC
4. After rebooting, make sure there's a working internet connection
5. Check if the LAN is active
6. Check if the network cable of the VMBHIS is correctly connected to the LAN
7. Check if the USB cable of the VMBHIS is correctly connected to the VMBRSUSB or VMB1USB of your Velbus installation
8. Check if your Velbus installation is powered up and working
9. Are all the previous steps OK? Then plug the power cable of the VMBHIS into the mains socket
10. Wait 5 minutes to make sure the VMBHIS has started
11. Look up the IP-address of the VMBHIS (see "Appendix 1: Find out the IP-address of your Home Center server" on page 6)
12. Start a web browser (preferably the latest version of Google Chrome) and type in the IP-address of the VMBHIS in the address bar. Press Enter
13. The login page of the Home Server Web Client should appear. Standard login credentials are: username "admin", password "admin" (both without quotes, and lowercase)

If the problems persist, please consult the "Documentation" page on www.homecenter.be. Solutions to the most common problems are listed there.

As a last resort, you can contact Stijnen Solutions, developer of the software. Contact details are listed on www.homecenter.be > Contact.