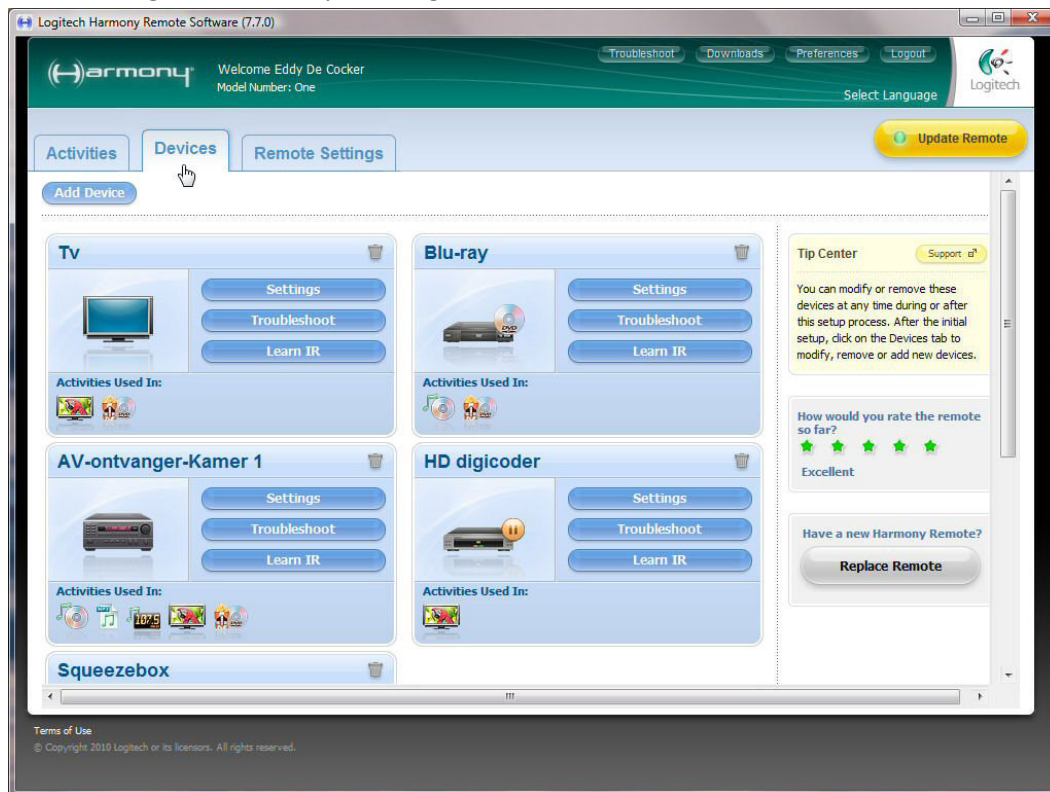
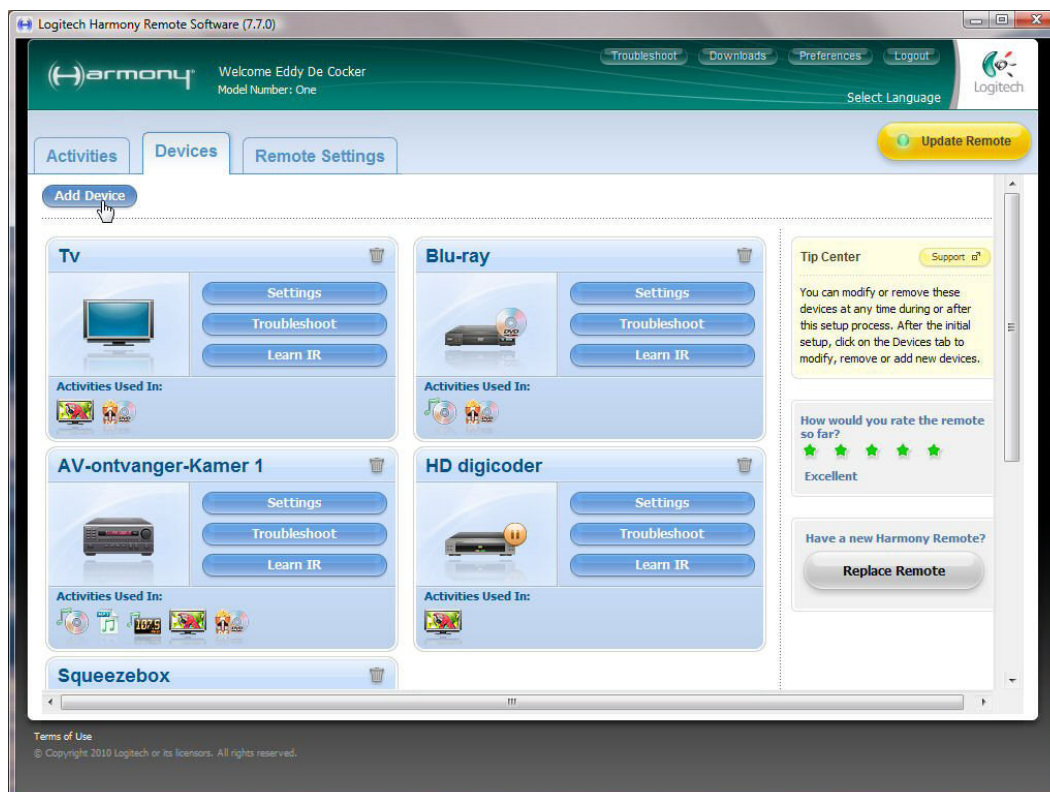


Logitech Harmony™ Configuration for Velbus

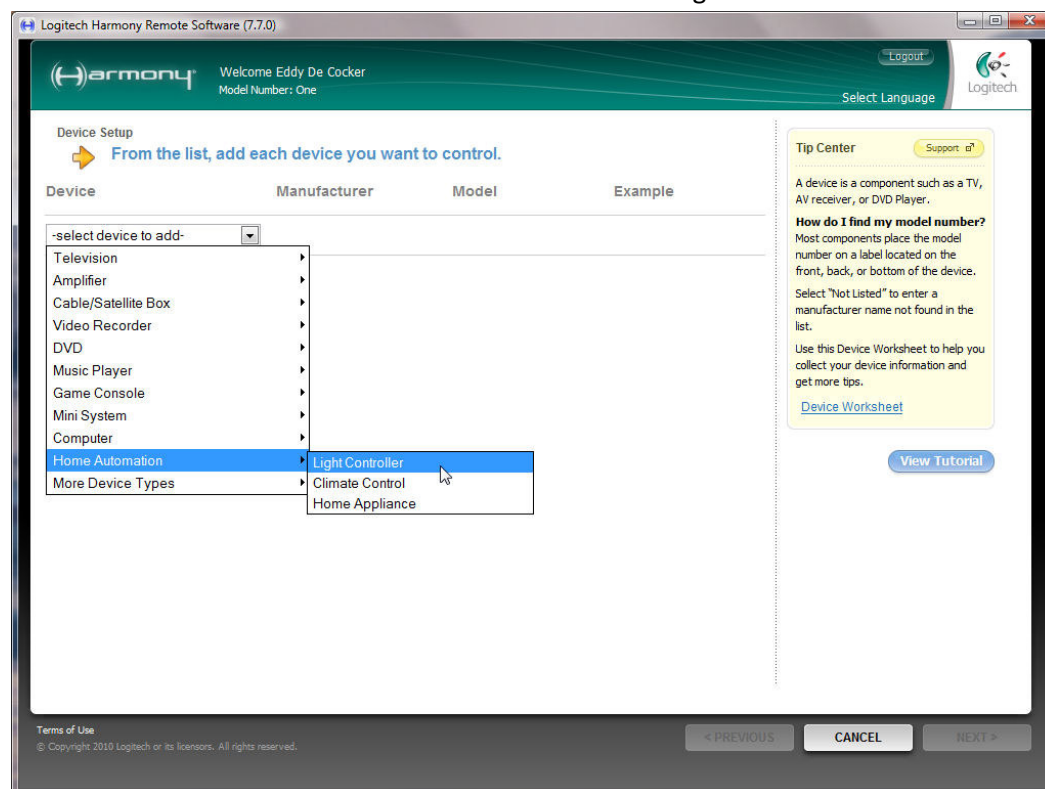
Start the Logitech Harmony™ configuration software and click on “Devices”.



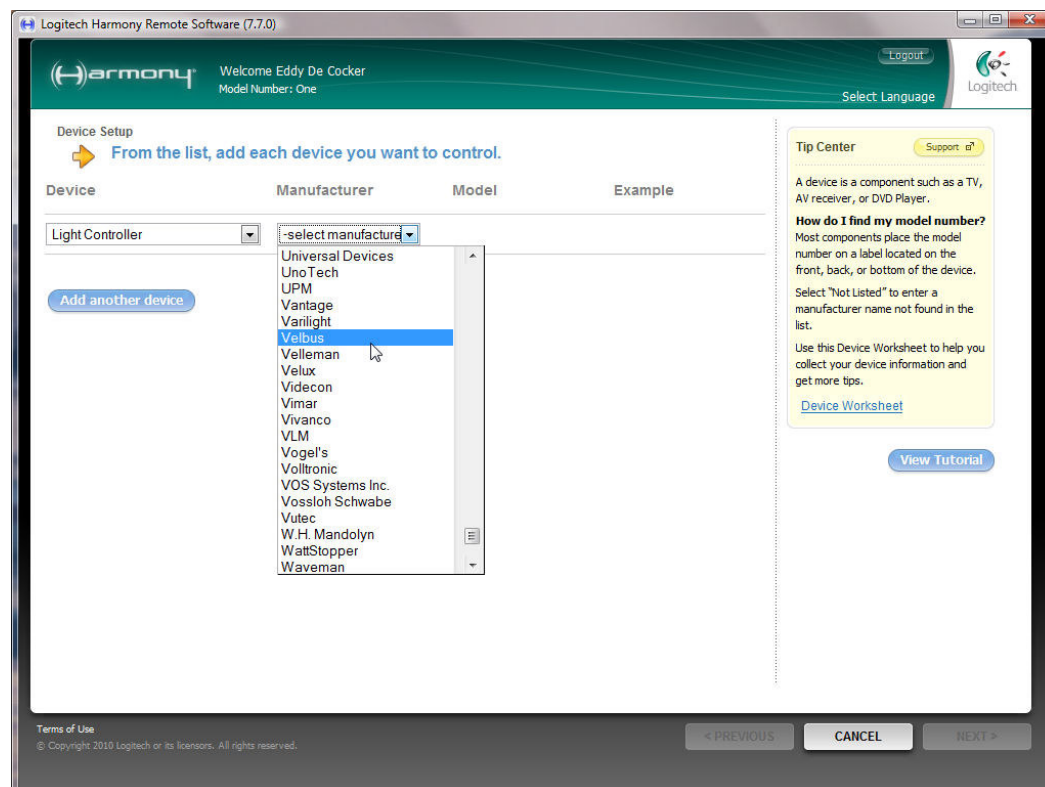
Click on “Add Device”.



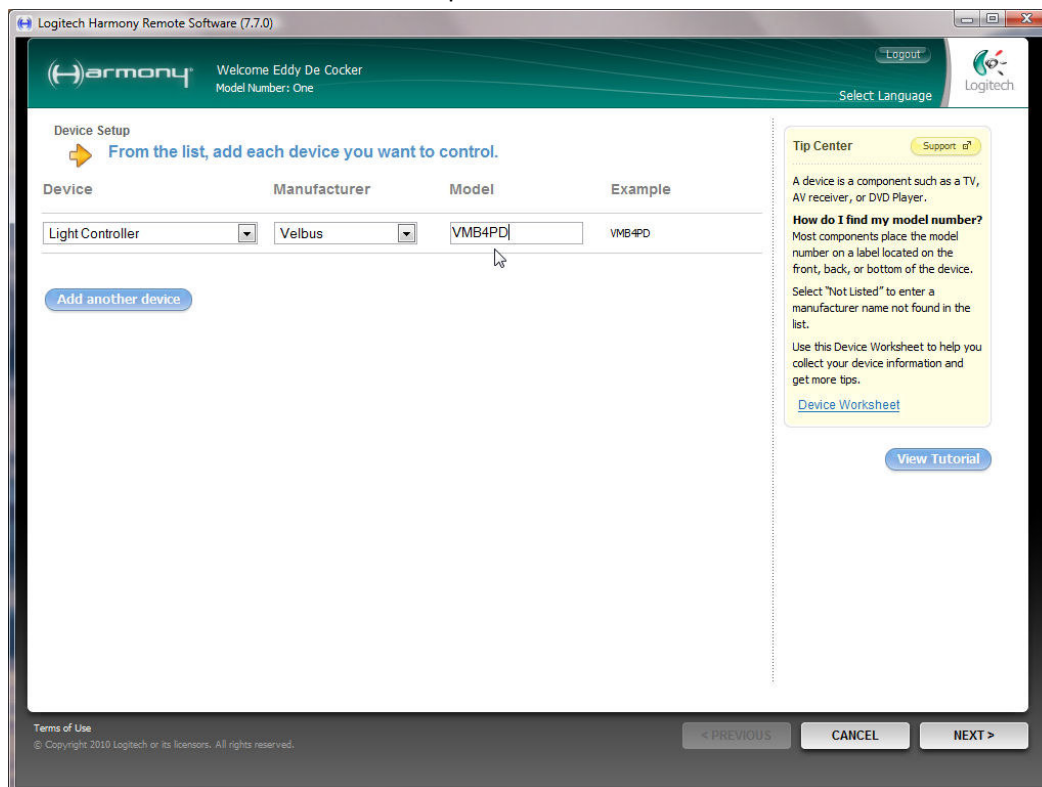
Select the device “Home Automation” and then select “LightController”.



Select the manufacturer “Velbus”.



Enter the model “VMB4PD” and complete the wizard

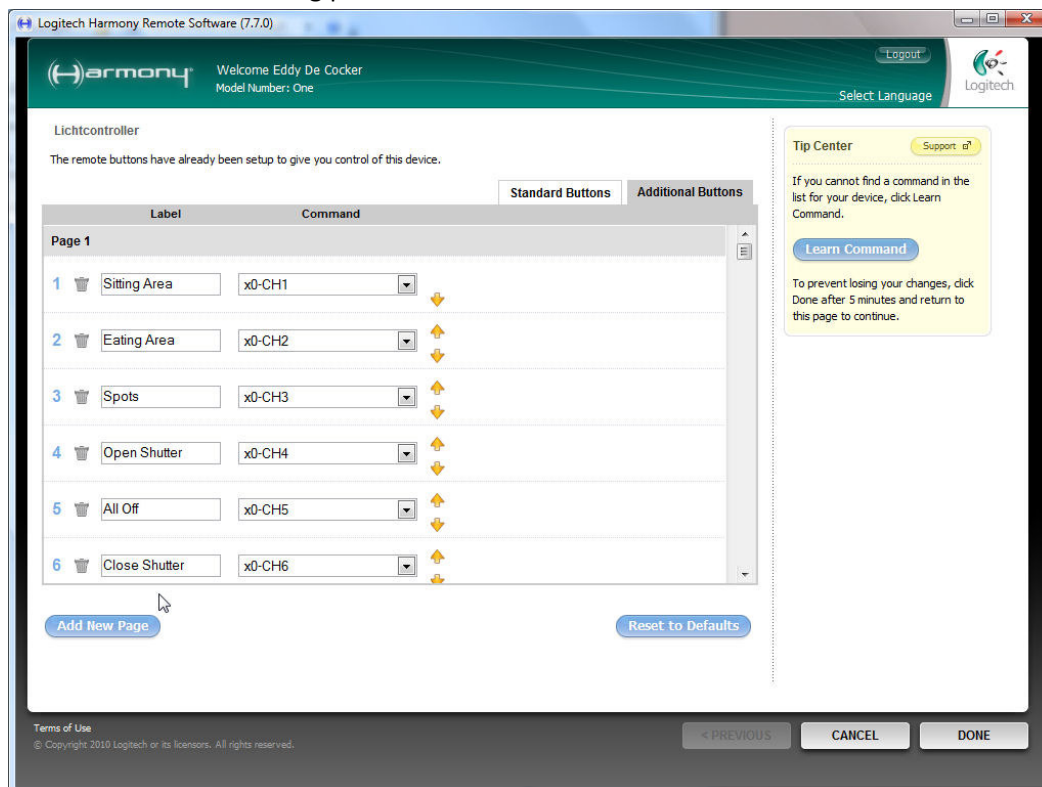


The screenshot shows the 'Device Setup' screen of the Logitech Harmony Remote Software (7.7.0). The user is logged in as 'Eddy De Cocker' with 'Model Number: One'. The interface prompts the user to 'From the list, add each device you want to control.' Below this, there are dropdown menus for 'Device' (set to 'Light Controller'), 'Manufacturer' (set to 'Velbus'), and 'Model' (set to 'VMB4PD'). An 'Add another device' button is visible. On the right, a 'Tip Center' provides instructions on how to find a model number. At the bottom, there are navigation buttons: '< PREVIOUS', 'CANCEL', and 'NEXT >'.

Device	Manufacturer	Model	Example
Light Controller	Velbus	VMB4PD	VMB4PD

Search for the address on the VMB4PD control panel you would like to control with your remote. The **second digit** of that address is important in order to label the remote's pushbuttons.

Example: If the panel's address is set to "10", then you can label each pushbutton with labels "x0-CH1" to "x0-CH8". Delete all remaining pushbuttons.



The screenshot shows the 'Lichtcontroller' screen of the Logitech Harmony Remote Software (7.7.0). The user is logged in as 'Eddy De Cocker' with 'Model Number: One'. The interface shows a table of buttons with labels and commands. The 'Standard Buttons' tab is selected. The table has columns for 'Label' and 'Command'. The buttons are numbered 1 through 6. The 'Add New Page' button is visible at the bottom left, and the 'Reset to Defaults' button is at the bottom right. On the right, a 'Tip Center' provides instructions on how to find a command. At the bottom, there are navigation buttons: '< PREVIOUS', 'CANCEL', and 'DONE'.

	Label	Command
1	Sitting Area	x0-CH1
2	Eating Area	x0-CH2
3	Spots	x0-CH3
4	Open Shutter	x0-CH4
5	All Off	x0-CH5
6	Close Shutter	x0-CH6

Complete the wizard and update the remote control.