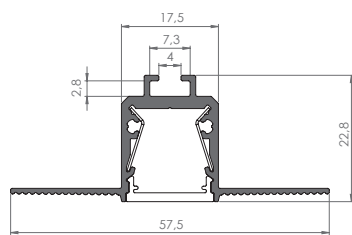


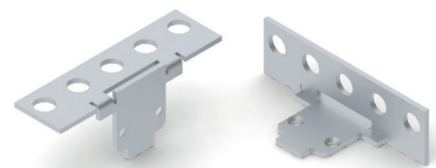
RSL15 US LED PROFILE

RSL15 US; 57,5 x 22,8 mm

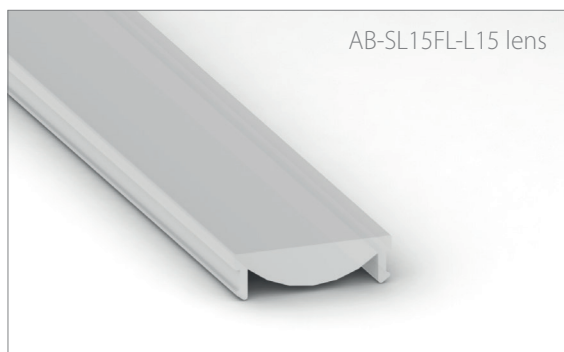
The first profile in Plasterboard Line originating from our Slim Line family. Designed to fit 12mm LED strip, with possibility to be equipped with highly polished aluminum reflectors which increase light output up to 20%. Together with it comes two standard covers: clear and opal, both can be used with micro-prismatic, slide-in film diffuser. Additionally, it is designed to be used with our 15-degree PMMA optic lens. Opal diffuser provides 'LED dots free effect' creating uniform line of light. High quality dedicated endcaps complement this raw-aluminum design, providing narrow and elegant solution.



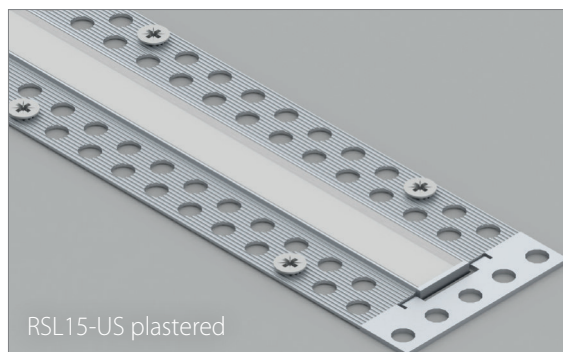
AL-RSL15 US
AB-SL15 FL-M
6-DURIS
AL-REF13-B60



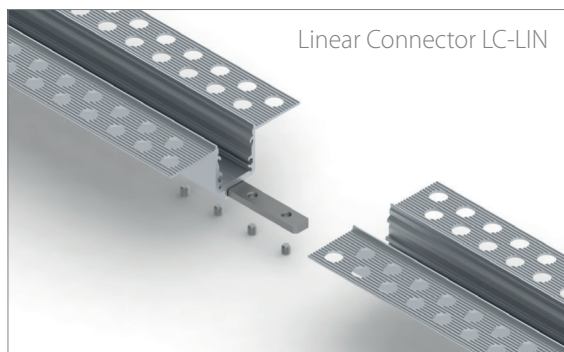
Aluminum end caps
EC-RSL15 US



AB-SL15FL-L15 lens

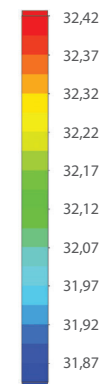
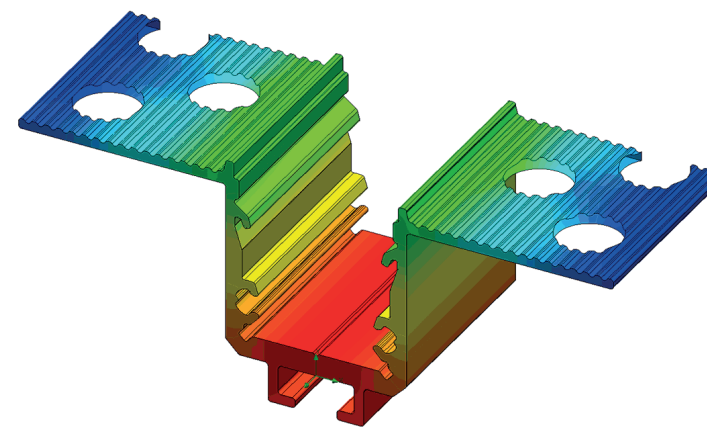


RSL15-US plastered

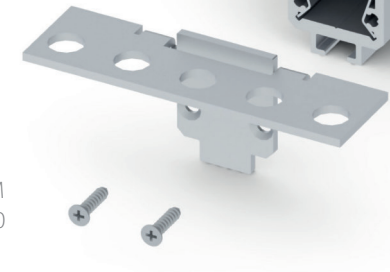


Linear Connector LC-LIN

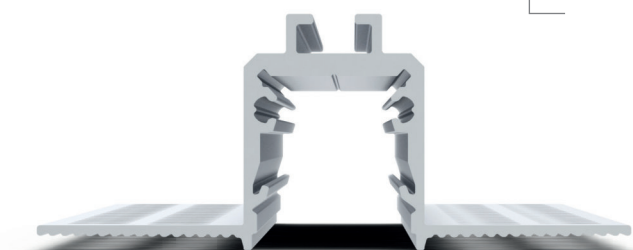
AL-RSL15 US
AB-SL15 FL-M
EC-RSL15 US
AL-REF13-B60
6-DURIS



Temperature (Solid) [°C]
Temperature ambient: 25°C
Total power: 10W/m (126LEDs)
LED stripe: 6-DURIS



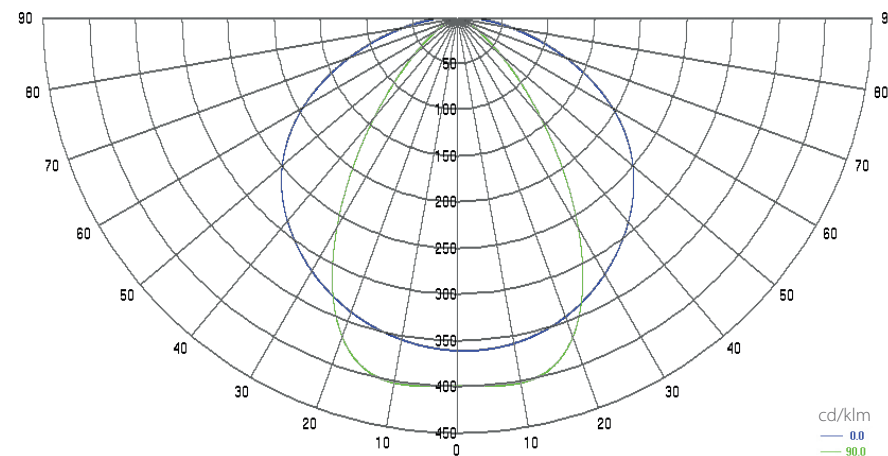
AL-RSL15 US
AB-SL15 FL-M
AL-REF13-B60
EC-RSL15 US



Cross section view of RSL15 US

AL-RSL15 US
AB-SL15 FL-M
6-DURIS
AL-REF13-B60

Polar Candela Distribution Plot
Using Missed Rays



cd/klm
0.0
90.0

