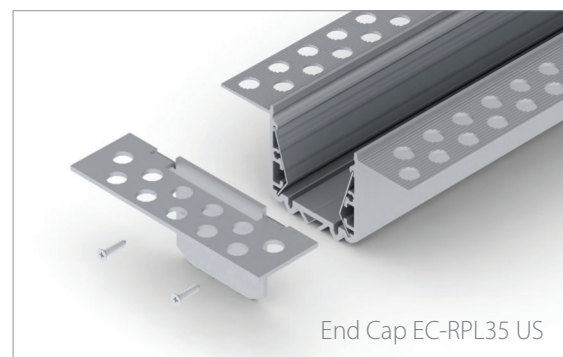
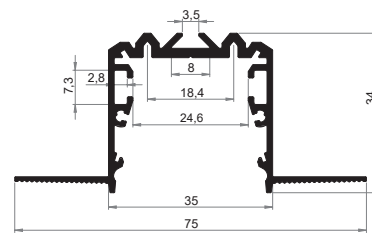


AL-RPL35 US  
AL-REF25-B50  
AB-PL-M/K  
17-DURIS

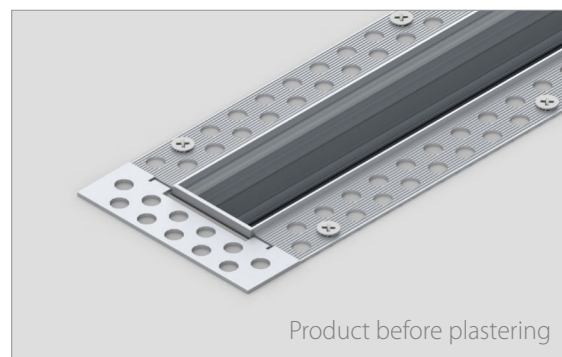
## RPL35 US LED PROFILE

RPL35 US; 75 x 34 mm

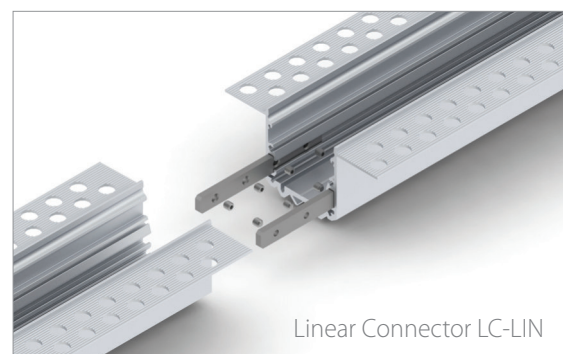
Narrow, high-quality raw aluminum profile for plasterboard ceilings and walls. Innovative design provides unique features such as: Premade angle modules, mounting rail for the junction box and dedicated openings for the ease of installation. The profile is also equipped with reflectors made of highly polished aluminum designed for better light distribution (improvement of luminaire efficiency; 18 – 20%). RPL35 US allows you to easily attach a 20mm wide PCB in the Zhaga standard and is designed to distribute the heat efficiently all the way up to 40W/m. The RPL35 US profile is available with UV and impact resistant, snap-in diffusers: transparent, matt, prismatic transparent and prismatic matt.



End Cap EC-RPL35 US



Product before plastering

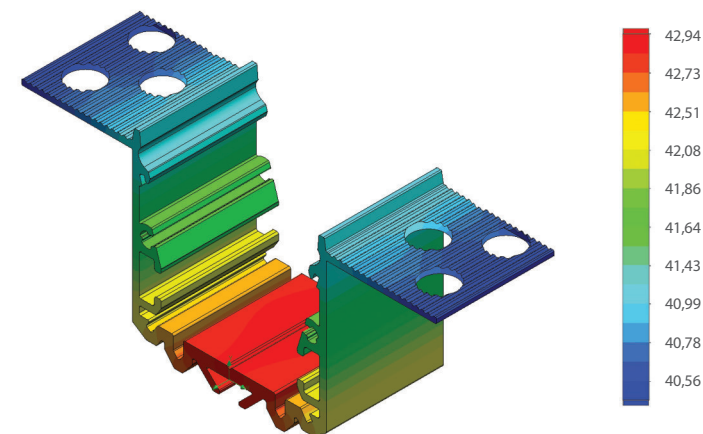


Linear Connector LC-LIN

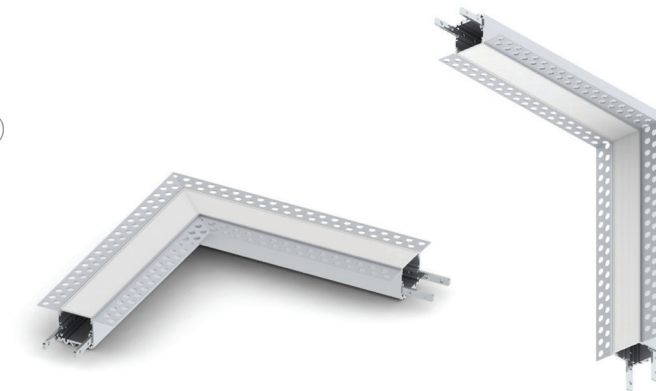


RPL35 US with junction box

AL-RPL35 US  
AL-REF25-B50  
AB-PL-M/K  
17-DURIS  
EC-RPL35 US



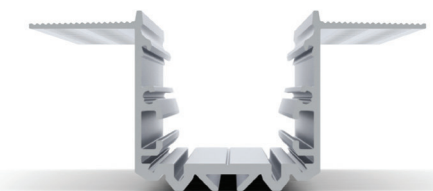
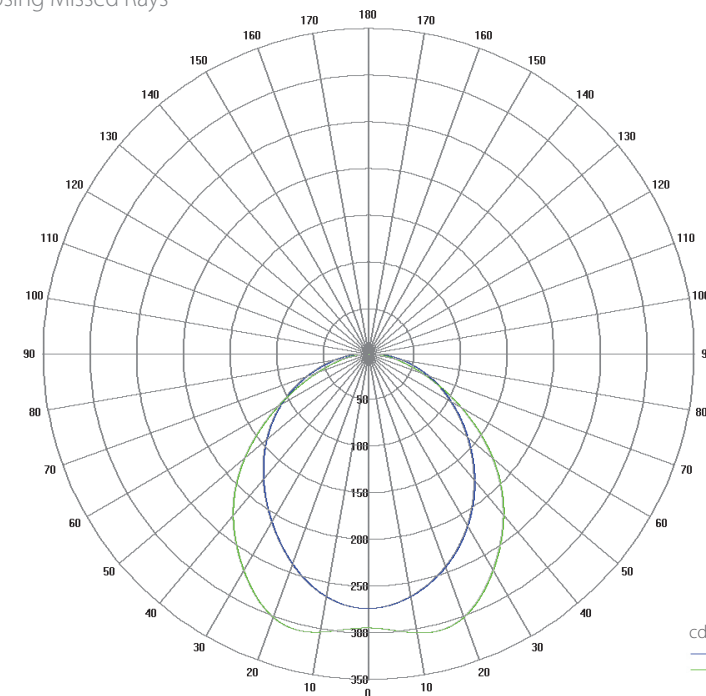
Temperature (Solid) [°C]  
Ambient temperature : 25° C  
Total power : 36 W/m (72 LEDs)  
LED stripe: 17-DURIS



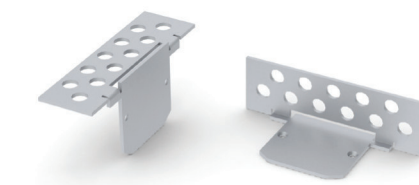
RPL35 US horizontal connection using 90LC-HOR

RPL35 US vertical connection using 90LC-VER

Polar Candela Distribution Plot  
Using Missed Rays



Cross section view of RPL35 US



Aluminum end caps EC-RPL35 US

AL-RPL35 US  
AL-REF25-B50  
AB-PL-M/K  
17-DURIS

