



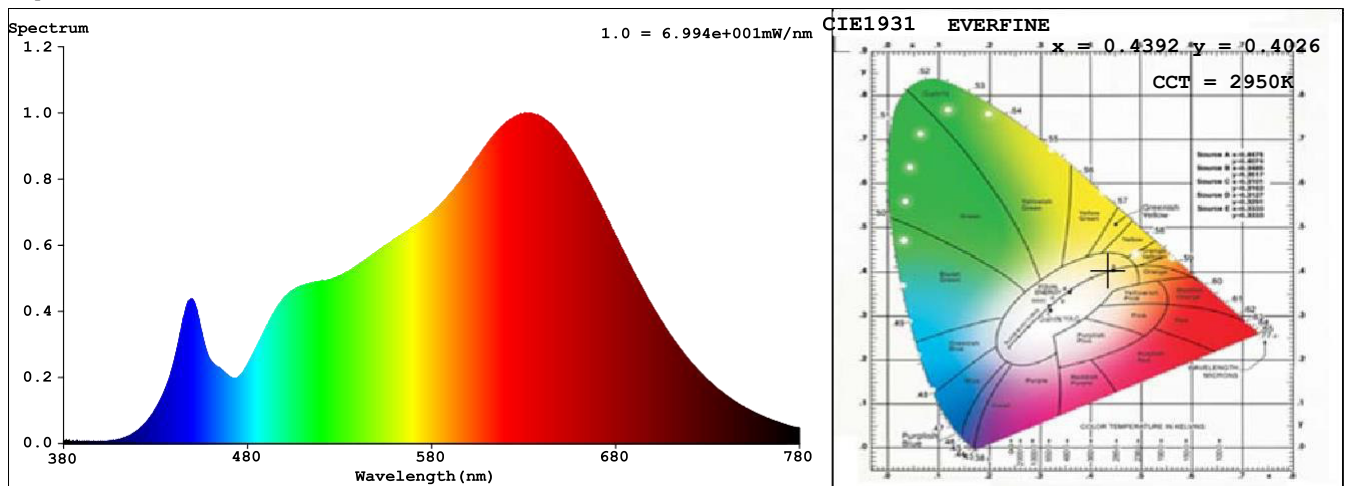
Spectrum Test Report

Sample	: E24N173W27	Date	: 2019-04-17 17:25:32
Specification	: 2835 240LED 12MM 24V 38.4W 2700K IP20 CRI90 1M		
Sample No.	: LD19040302#44	Instrument	: HaasSuite(EVERFINE)
Manufacturer	:	Test by	: Velleman
Assessor	:		
Remark	:		

Test Condition

Temperature	: 25.3Deg	RH	: 65.0%
WL Range	: 380nm-780nm	IP	: 52588 (80%)
Test Mode	: Fast Test	T	: 57 ms
		Sensitivity	: High

Spectrum



Spectral Distribution

CIE1931 Chromaticity Diagram

Colorimetric Parameters

Chromaticity Coordinate: $x = 0.4392$ $y = 0.4026$ / $u' = 0.2527$ $v' = 0.5211$ ($duv = -8.93e-04$)

CCT= 2750K Prcp WL: $L_d = 583.4\text{nm}$ Purity=52.7%

Peak WL: $L_p = 631\text{nm}$ FWHM: =164.3nm Ratio:R=25.5% G=71.3% B=3.2%

Render Index: $R_a = 97.7$ CRI = 96.8 AvgR = 96.9 TM30:Rf=96 Rg=102

R1 =99 R2 =99 R3 =99 R4 =97 R5 =98 R6 =96 R7 =97

R8 =95 R9 =90 R10=98 R11=94 R12=95 R13=99 R14=99 R15=98

LEVEL:OUT WHITE:ANSI_3000K

Photometric & Radiometric Parameters

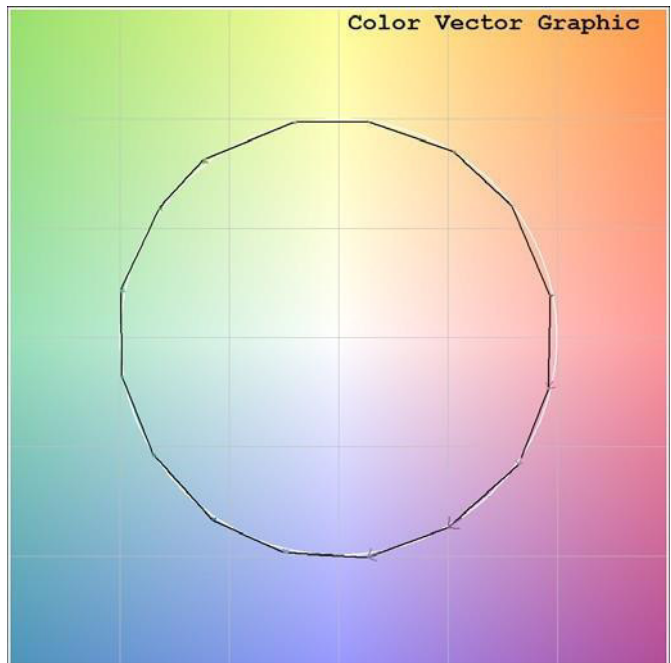
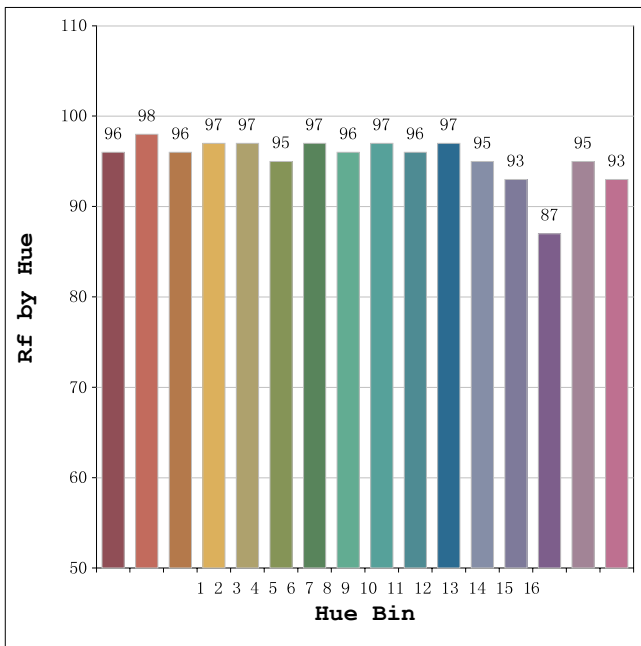
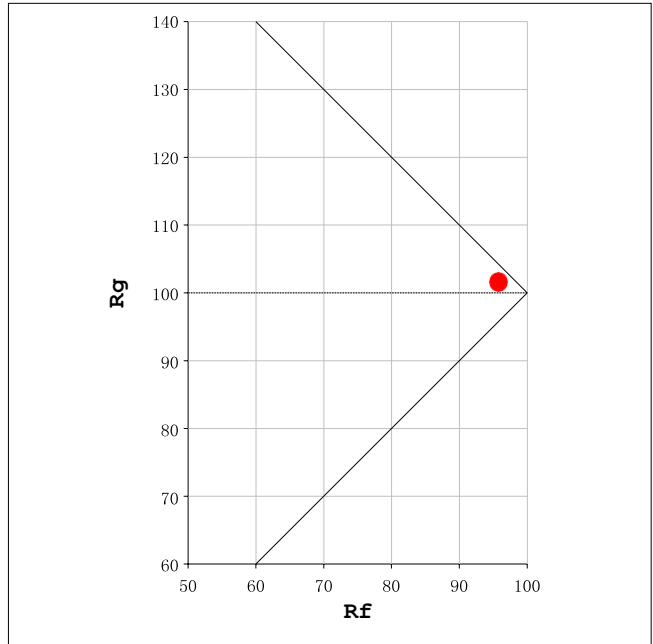
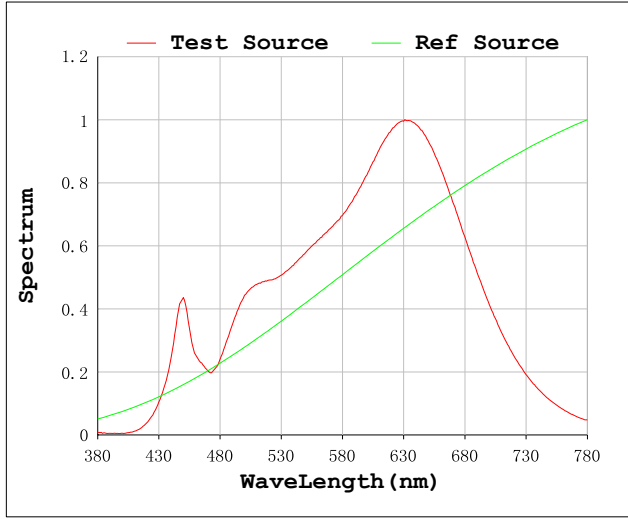
Flux = 3251.9 lm Eff. : 82.87 lm/W Fe = 12.298 W

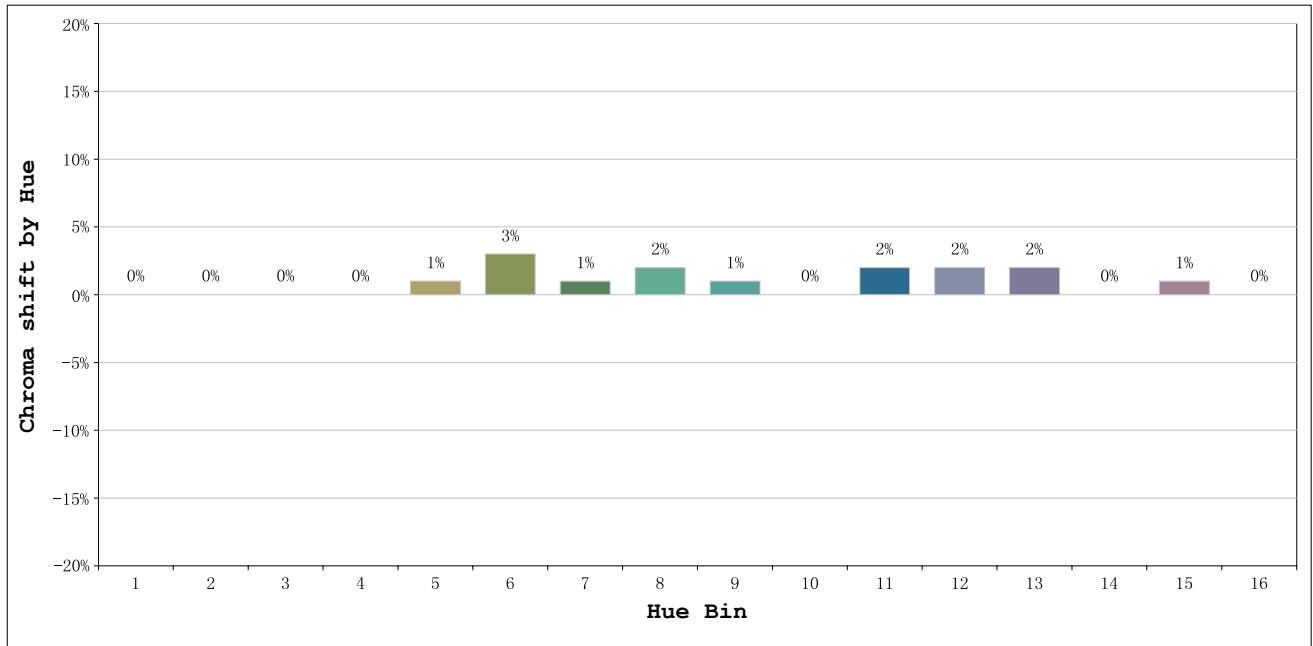
Flux of emitted photons($\mu\text{mol/s}$):61.52 Fluo. and blue light ratio:13.14 Fluorescent eff.:291.3

Electrical parameters

V = 24.00 V I = 1.635 A P = 39.24 W PF = 1.000 F=0.00 Hz

Rf: 96 CCT: 2950 K u': 0.2527
 Rg: 102 Duv: -0.0009 v': 0.5211





Hue Bin	Hue Angle	Rf	Graphic shift(%)	
			Chroma	Hue
1	0.0° - 22.5°	96	0	0
2	22.5° - 45.0°	98	0	0
3	45.0° - 67.5°	96	0	1
4	67.5° - 90.0°	97	0	0
5	90.0° - 112.5°	97	1	1
6	112.5° - 135.0°	95	3	1
7	135.0° - 157.5°	97	1	0
8	157.5° - 180.0°	96	2	0
9	180.0° - 202.5°	97	1	0
10	202.5° - 225.0°	96	0	0
11	225.0° - 247.5°	97	2	0
12	247.5° - 270.0°	95	2	-1
13	270.0° - 292.5°	93	2	-5
14	292.5° - 315.0°	87	0	-7
15	315.0° - 337.5°	95	1	-2
16	337.5° - 360.0°	93	0	-3